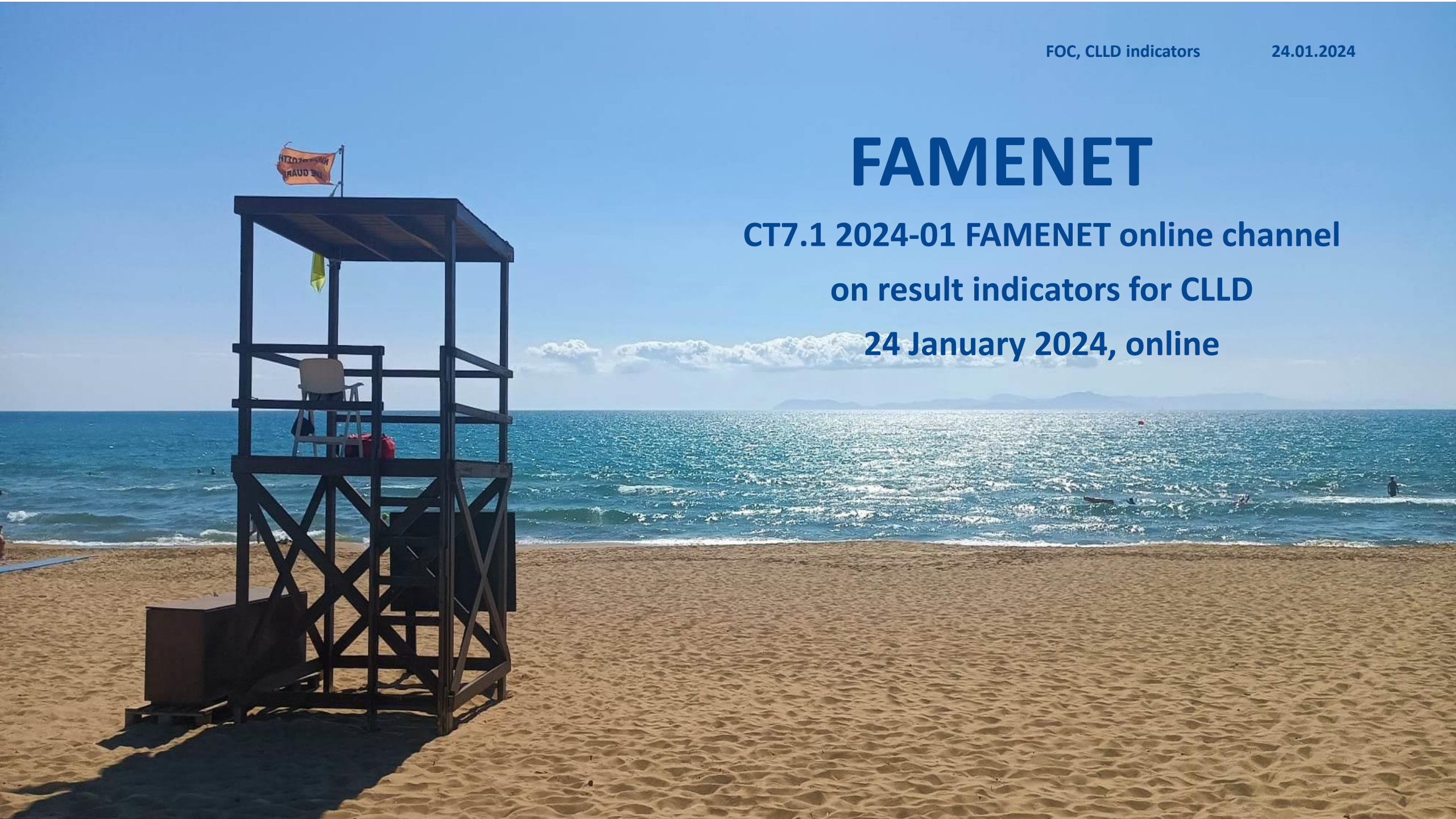


FAMENET

CT7.1 2024-01 FAMENET online channel

on result indicators for CLLD

24 January 2024, online





Result indicators for CLLD

FAMENET online channel



CT7 2024-01

Our agenda today

Introduction

Why are common
result indicators
important?

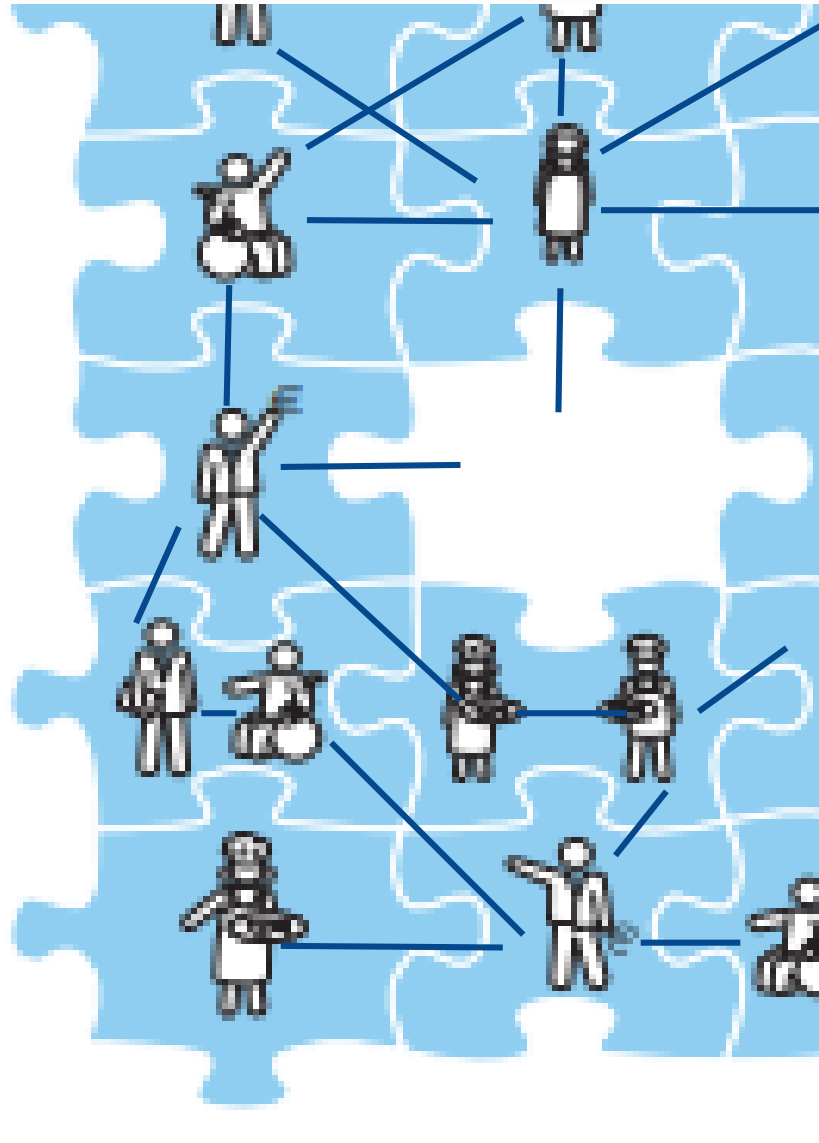
Scotland's
experience with
CLLD indicators

CLLD indicators
selected for the
EMFAF

Examples from
Member States

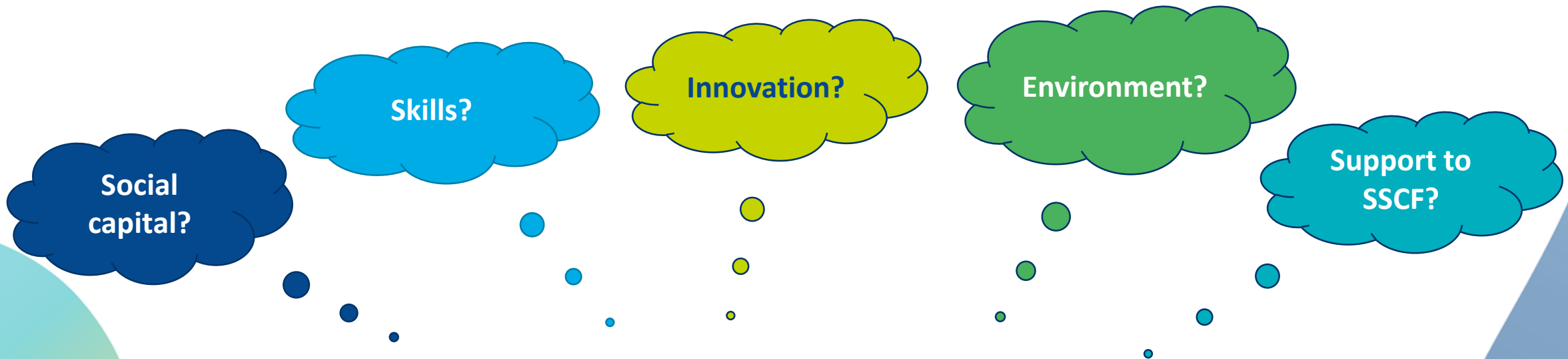
Closing,
discussion

Why are CLLD result indicators important?



Results reported for CLLD - EMFF

- **14 000 operations reported** (for approx: 730 M€ allocated)
 - 8 466 jobs created
 - 14 583 jobs maintained
 - 1 211 businesses created
- **Around 60% of operations (8 178) do NOT report any RESULTS!**



Mentimeter questions

1. Have you evaluated EMFF CLLD at the programme level?



Go to [menti.com](https://www.menti.com)
Enter code: 2297 1720

2. How **HELPFUL** were the common EMFF indicators for evaluating CLLD?

Experience from multi-fund CLLD in Scotland

Alistair Prior

CLLD Result indicators programmed - EMFAF

Result Indicator programmed for CLLD	Target value	nr of MS
CR13 Cooperation activities between stakeholders	442	13
CR08 Persons benefitting	4.669.641	12
CR19 Actions to improve governance capacity	631	11
CR06 Jobs created	1.810	10
CR07 Jobs maintained	3.004	9
CR10 Actions contributing to GES, animal health and welfare	383	7
CR03 Businesses created	169	5
CR11 Entities increasing social sustainability	153	5
CR14 Innovations enabled	140	5
CR16 Entities benefitting from promo and info activities	235	4
CR17 Entities improving resource efficiency	20	1
CR21 Datasets and advice made available	4	1
CO01 Number of operations	10.181	all 18

Will these indicators capture the results of CLLD in your country?

Number of result indicators programmed in CLLD in each MS	2	5	4	7	2	3	4	6	5	2	5	5	12	2	6	3	5	5
Result Indicator programmed for CLLD	BE	BG	CY	DE	EE	EL	ES	FI	FR	HR	IE	IT	LT	LV	PL	PT	RO	SI
CR13 Cooperation activities between stakeholders																		
CR08 Persons benefitting																		
CR19 Actions to improve governance capacity																		
CR06 Jobs created																		
CR07 Jobs maintained																		
CR10 Actions contributing to GES, animal health and welfare																		
CR03 Businesses created																		
CR11 Entities increasing social sustainability																		
CR14 Innovations enabled																		
CR16 Entities benefitting from promo and info activities																		
CR17 Entities improving resource efficiency																		
CR21 Datasets and advice made available																		



Coffee break – back at 11.00

Experience from Lithuania

Will these indicators capture the results of CLLD in your country?

Do you expect operations that will not fulfill any of the CRIs selected?

Number of result indicators programmed in CLLD in each MS	2	5	4	7	2	3	4	6	5	2	5	5	12	2	6	3	5	5
Result Indicator programmed for CLLD	BE	BG	CY	DE	EE	EL	ES	FI	FR	HR	IE	IT	LT	LV	PL	PT	RO	SI
CR13 Cooperation activities between stakeholders																		
CR08 Persons benefitting																		
CR19 Actions to improve governance capacity																		
CR06 Jobs created																		
CR07 Jobs maintained																		
CR10 Actions contributing to GES, animal health and welfare																		
CR03 Businesses created																		
CR11 Entities increasing social sustainability																		
CR14 Innovations enabled																		
CR16 Entities benefitting from promo and info activities																		
CR17 Entities improving resource efficiency																		
CR21 Datasets and advice made available																		

MENTI questions

*Based on your FLAG strategies, to what extent do you expect the Common Result Indicators (CRIs) selected in **your country** to cover all CLLD operations?*



Go to [menti.com](https://www.menti.com)
Enter code: 2297 1720

FAMENET website - FAQ

Answer = YES!

Is it possible to report common result indicators not contained in the national EMFAF Programme when reporting on EMFAF-funded operations?

When reporting on funded operations under EMFAF Article 46 (Infosys), most operations should be covered by the common result indicators included in the programme. For operations where this is not the case, Managing Authorities must include one (or more) of the EMFAF Annex I common result indicators in Infosys, even if they are not contained in the national programme.

Since result indicators for CPR Article 42 reporting are preloaded into SFC from the national programme, there may be fewer common result indicators in SFC for CPR reporting than there are in Infosys. Managing Authorities and DG MARE personnel should be aware of these potential differences and their cause when evaluating EMFAF reporting data.

Additional selected and reported indicators in Infosys can help to provide a more accurate picture of the intended effects of an operation. There can be no operation without at least one EMFAF common result indicator.

NO NEED for programme revision !

Why report on **more common result indicators** in **Infosys** (including CRIs not in Programme)?

- To fully capture results achieved!
- Easy to use (detailed indicator fiches available) >> common understanding
MA/IB/FLAG
- Infosys is there! and it is maintained, checked and supported
- Triangulation of Infosys fields >> valuable information for evaluators

MEF Working Paper: includes...

CR13	Cooperation activities between stakeholders
Indicator name	Cooperation activities between stakeholders
Measurement unit	Number of actions
Definition	Number of new sustainable cooperation activities implemented that involve more than one partner/entity/institution (includes businesses, FLAGs, NGOs, POs, APOs, IBOs, training and governmental organisations)
Further clarification	Cooperation is defined as any activity that includes two or more partners/entities/institutions. The cooperation should involve a sustainable result such as an agreement, initiative, joint business, project, product, innovation, memorandum of understanding, consultation process, joint learning, etc. Cooperation includes for example: <ul style="list-style-type: none"> • cooperation on fisheries control and coastguard operations (e.g. Frontex and EFCA) • regional maritime cooperation in support of integrated governance and maritime policy management • cooperation among ministries, agencies or regions within a single MS • cooperation with other MS, EU agencies or initiatives • cooperation with third countries CLLD cooperation includes: <ul style="list-style-type: none"> • all types of partners (fishers, researchers, local authorities, businesses, NGOs etc.)
Further clarification direct management	Ocean partnerships, coastguard, RFMO support

Programme level

Clarification

Baseline value

Definitions of each indicator



MENTI questions

Would you consider reporting on more CRIs in Infosys? (beyond those programmed)



Go to [menti.com](https://www.menti.com)
Enter code: 2297 1720

**How this could work : *Greece as an example,
a theoretical experiment...***

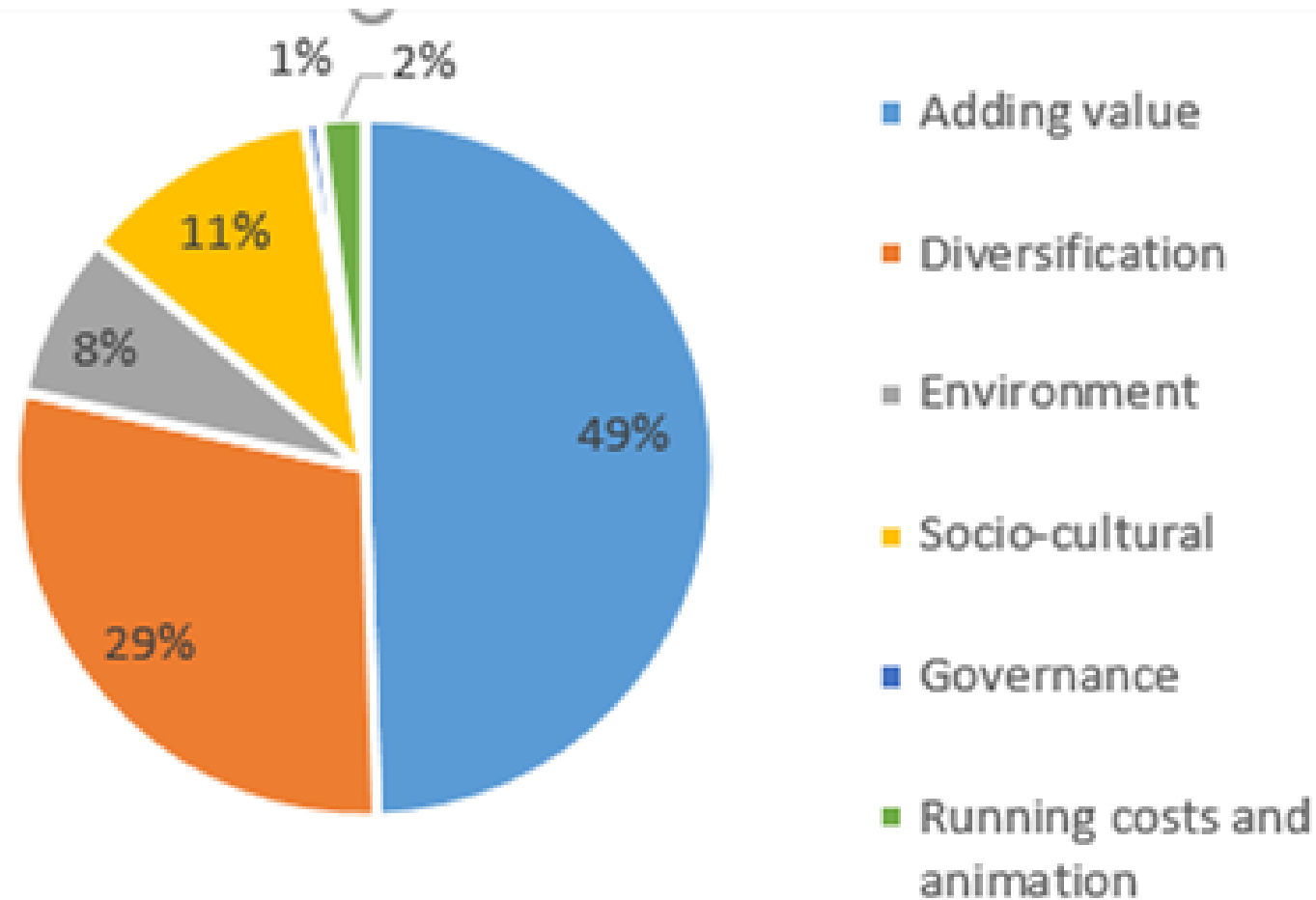
The Greek monitoring and reporting system

- 21 EU Programmes, app. EUR 21 billion EU funds, a single Common Monitoring and Management System (the so-called OPS)
- One central, rigorous and coherent database hosted on an in-house server, evolved organically over three programming periods; performs very well.
- All users (beneficiaries, IBs, MA, PA) have access to the same core, but with different rights:
 - Beneficiaries submit data
 - IBs conduct checks and corrections, provide feedback and release the data as submitted.
 - The MA conducts checks and corrections and generates reports

The Greek EMFAF programme and CLLD

- *Total EMFAF funds: EUR 363.7 million*
- *Priority 3: EUR 49,9 million*
- *Output indicator target for CLLD: 310*
- *3 selected common result indicators:*
 - ***CR03 business created: 70 expected***
 - ***CR08 persons benefitting: 11 000 expected***
 - ***CR13 cooperation: 10 expected***

EMFF, operations in Greece 2014-2020



How to set-up a flexible CRI selection for CLLD I/2?

- *Supreme rule: no operation without at least one CRI (and not with value = zero or blank)*
- *At what level to establish?: easy to do at the **OPS level** (IF CLLD, all indicators can be selected, only programme indicators used for Article 42 reporting), OPS helpdesk can assist*
- *At what level to decide what applies?: probably the IB is the best level, close to implementation, experienced with OPS, screening with Local Strategy*
- *Who sets the target? probably IB and beneficiary need to negotiate in the initial phase until enough experience is available*

How to set-up a flexible CRI selection for CLLD 2/2?

- *What happens with the programme indicators?: probably OPS and MA to decide, if not applicable are they reported with zeros? Is there a check?*
- *What happens with the reported values?: reported in Infosys, excluded in SFC Article 42. But how to use them more to consistently report all things happening with CLLD? What about the combination with other Infosys data (for example type of beneficiaries?)*

Flexible CRI selection for CLLD, changes needed

Programme: none

OPS database set-up:
minimal change in
selectable CRIs

LAG: broader
choice of CRIs

LAG OPS
reporting:
none

MA Infosys
reporting:
none

MA SFC
reporting:
none

Flexible CRI selection for CLLD in Greece, pros and cons

- **Advantages:**

- *Easy, builds on an existing system (OPS+CRI), just need to change a reference table*
- *No extra work in reporting, OPS and Infosys as usual*
- *LAGs do not need to develop parallel systems*

- **Disadvantages**

- *Someone needs to take decisions, not a bad thing actually 😊*

How do we get a strong message to build on for the future?

Good use of the common result indicators!

Final Menti question!

Tell us if this session has been useful 😊



Go to [menti.com](https://www.menti.com)
Enter code: 2297 1720

Thank you!

Evaluation@famenet.eu

CLLD@famenet.eu

[Working paper: EMFAF monitoring and evaluation framework 2021-2027 - European Commission \(europa.eu\)](#)