



European Maritime and Fisheries Fund (EMFF)

Sweden

Sweden – overview

Coast, lakes and ports

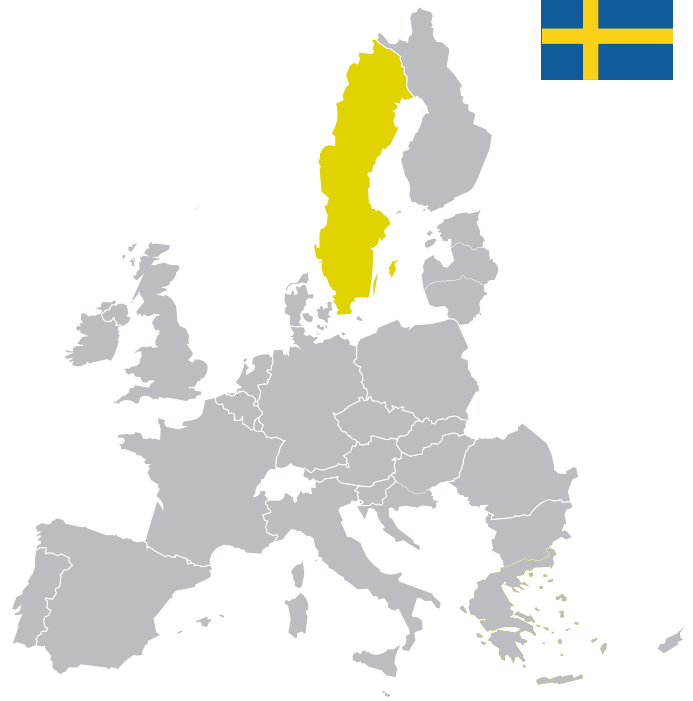
Sweden has around 90 000 lakes and a coastline that is one of the longest in the EU Member States (13 567 km). The east coast borders the semi-enclosed Baltic Sea, which suffers from eutrophication. To the west, the Skagerrak, Kattegat and Öresund form the gateway between the Baltic Sea and the North Sea. The most important Swedish fishing ports are on the west coast. The main fishing port in terms of fleet capacity is Fiskebäck, which accounts for around 22 % of the total gross tonnage. Other significant ports are Rörö and Fotö in the Skagerrak area, Träslövsläge in the Kattegat area and Simrishamn, Skillinge and Nogensund on the south coast.

Potential

Although the fishing sector represents a minor part of Sweden's gross domestic product (GDP) — around 0.10 % — it nevertheless plays an important role in some regions and communities. In 2014, the Swedish fishing fleet consisted of 1 267 registered vessels, with a combined gross tonnage of 30 000 and engine power of 171 000 kW. Most fishing enterprises own a single vessel. In 2013, the fleet landed 178 000 tonnes of seafood worth EUR 131 million. Generally speaking, Swedish fishing segments with vessels over 12 meters (m) are earning positive net profits. The segments below 12 m, however, are making net losses.

The Swedish aquaculture sector is dominated by small enterprises (78 % have fewer than 5 employees). In 2012, the Swedish aquaculture sector produced around 14 400 tonnes, mainly rainbow trout. The sector is expected to grow by 8 % annually from 2014 to 2020.

The net turnover of the Swedish fish processing industry shows a positive trend from 2001, with the exception of 2009 when the Swedish krona was weak compared to the euro.



Economic performance and employment

In 2013, the total value of landings by the Swedish national fleet was EUR 131.2 million, an increase of 7 % compared to 2008. The catch sector counted 886 full time equivalent (FTE) employees. In 2012, the aquaculture sector, with 263 FTE employees, generated a gross revenue of EUR 49.8 million, and turned a net profit of EUR 5.7 million.

The fish processing sector, with 1 831 FTE employees in 2012, generated EUR 613.2 million in gross revenue and turned a net profit of EUR 12.8 million.

Sweden's Operational Programme



Budget

Total (EU + national):
€172 885 912

EU contribution:
€120 156 004 ⁽¹⁾

The Operational Programme (OP) covers the six 'Union Priorities' defined in the EMFF, namely:

-  promoting environmentally sustainable, resource-efficient, innovative, competitive and knowledge-based **fisheries**;
-  fostering environmentally sustainable, resource-efficient, innovative, competitive and knowledge-based **aquaculture**;
-  implementation of the **Common Fisheries Policy (CFP)**;
-  increasing **employment and territorial cohesion**;
-  fostering **marketing and processing**;
-  implementation of the **Integrated Maritime Policy (IMP)**.



1. Fisheries

What?

Fisheries management in Sweden is based on the EU's total allowable catch (TAC/quota) system, accompanied by other measures such as effort regulation and management/recovery plans. Since 2009, rights-based management systems (individual transferable quotas or ITQs) have been used in pelagic fisheries.

The Swedish fleet consists of three main groups:

- fishery with pelagic trawls and seines for herring, sprat, mackerel, vendace and blue whiting;
- fishery with bottom trawls for cod and other demersal species such as sole, prawns and Norway lobster;
- fisheries with passive gear (nets, fish pots, cages and longlines) mainly for cod, salmon, whitefish, Norway lobster, eels, lumpfish, dogfish, turbot, plaice, flounder, zander, pike, perch, mackerel and herring.

OP aim

One of the Swedish programme's main objectives is to facilitate implementation of the discard ban. Support from the EMFF will therefore boost investments aimed at reducing and handling bycatches. Measures related to the protection and restoration of marine biodiversity will also receive significant support.

Key result

Sustainable development of fisheries and environmental protection

Budget

EMFF: €22 042 074
National: €14 695 163



2. Aquaculture



What?

The most important aquaculture species in Sweden is rainbow trout grown in cages for consumption. Other species with a high market potential are the Arctic char, the pike-perch and blue mussels. Mainly ponds and raceways are used for producing fish for stocking. New growing techniques — such as recirculating systems — are being developed, but attaining a commercially viable scale is proving a challenge.

OP aim

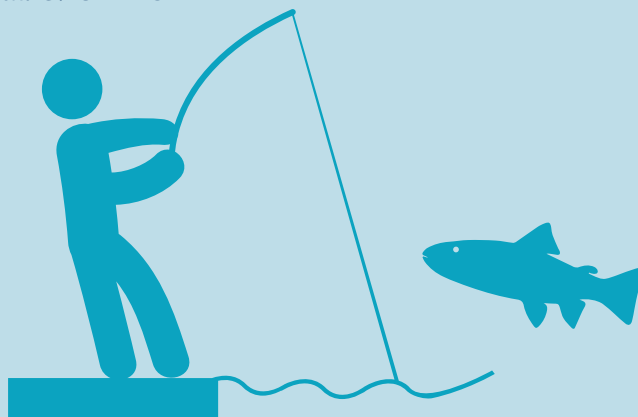
The EMFF supports the implementation of the Swedish multi-annual aquaculture strategy for 2014 to 2020, mainly by financing innovation and productive investments. The aquaculture strategy aims at simplifying the administrative burden linked to aquaculture licencing, improving the physical planning of aquaculture sites and strengthening the competitiveness and sustainability of the aquaculture sector.

Key objective

Economic growth, competitive and environment-friendly aquaculture production.

Budget

EMFF: €11 871 275
National: €7 914 184



(1) Including Technical Assistance of EUR 5.864.124

3. Common Fisheries Policy (CFP)



What?

Reliable data on fish stocks and effective control of fishing activities are crucial for implementing the revised CFP, particularly for the implementation of the discard ban and fisheries management based on maximum sustainable yield.

OP aim

The Swedish programme supports the implementation of the 2014-2016 data collection programme and the future programme for 2017-2020, which will include measures to improve the harmonisation of data collection through regional cooperation, and the development of innovative data collection methods. As regards fisheries control, the programme mainly supports the development, purchase and installation of technology used for surveillance, data management and product traceability, as well as the purchase of control devices. Support will also be provided for training, exchange programmes and regional cooperation.

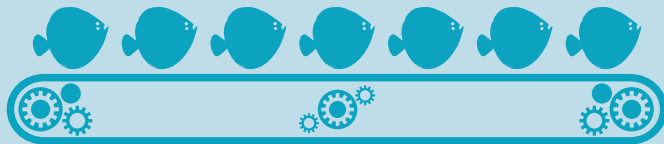
Key result

Sustainable fisheries through effective implementation of the CFP.

Budget

EMFF: €60 400 790

National: €10 518 445



4. Community-led local development (CLLD) strategies



What?

CLLD is complementary to other forms of development support at local level. Sweden has designated 13 CLLD areas involving EMFF financing. While four of these areas are financed exclusively by the EMFF, the remaining nine are so-called multi-fund areas, financed partly by EMFF and partly by other European Structural & Investment Funds.

OP aim

The Swedish EMFF programme supports initiatives by local groups (LAG) to promote sustainable fisheries and aquaculture as well as economic growth and job-creation. Projects financed by the EMFF typically involve the marketing of fisheries products (local products and shorter distribution circuits) and the diversification of fisheries businesses (coastal tourism and restaurants).

Key result

Sustainable fisheries and aquaculture, creation of local businesses and jobs.

Budget

EMFF: €8 343 266

National: €8 343 266

5. Marketing and processing



What?

The Swedish fish processing industry is very heterogeneous, with numerous small family businesses processing their own landings; there are also a few large-scale processing plants. The industry produces a wide range of fresh, chilled, canned and frozen products, which are based primarily on herring, whitefish, prawn and roe. Around three quarters of the raw material used by the fish processing industry is imported.

OP aim

The aim of the Swedish EMFF programme is to reinforce the processing and marketing of fisheries and aquaculture products through innovation, certification and improved product traceability. The producer organisations receive support to prepare production and marketing plans, which include measures to support the implementation of the discard ban. The EMFF will also support the creation of producer organisations within the aquaculture sector.

Key result

Strengthening the sector's competitiveness and sustainability.

Budget

EMFF: €7 188 915

National: €4 386 174



6. Integrated Maritime Policy (IMP)



What?

Sweden has established a large number of marine protected areas around its coasts, and is involved in major networks such as the marine component of Natura 2000, the Convention for the Protection of the Marine Environment of the North-East Atlantic (OSPAR) network and the Baltic Marine Environment Protection Commission (HELCOM) Baltic Sea protected areas. The Marine Strategy Framework Directive (MSFD), as the environmental pillar of the Integrated Maritime Policy (IMP), is the key component of the EU's policy for healthy, clean and productive seas. The objective of the MSFD is for European marine waters to achieve 'good environmental status' (GES) by 2020.

OP aim

The Swedish EMFF programme primarily focuses on the collection, analysis and dissemination of marine data, so as to support implementation of the MSFD. For example, financing will be provided for activities that aim at reducing the impact of fisheries on the marine environment.

Key result

Support the implementation of the MSFD to achieve healthy, clean and productive seas.

Budget

EMFF: €4 445 560

National: €2 963 260



Simplification

The EMFF programme foresees several measures to reduce the administrative burden: simplified costs, improved IT support and streamlined administrative processes.

Synergies

Various mechanisms have been put in place to achieve synergies between the ESI funds; dedicated coordination groups are one such example. Synergy effects are expected in terms of funding administration but also within the areas of environmental protection and local development (CLLD).

Success stories

Aquaculture



Development of a national competence centre in to reinforce cooperation across aquaculture producers, researchers, non-governmental organisations (NGOs) and public administration.

EFF support: SEK 1 211 961 (EUR 128 639).

Environmental protection



Development of selective pelagic trawls to reduce bycatches in Skagerrak.

EFF support: SEK 1 110 656 (EUR 117 886).

Local development



Creation of a Stockholm City fish market, supplied by catches from local small scale fishermen.

EFF support: SEK 400 000 (EUR 42 456).

More information

- European Commission Fisheries
- European Maritime and Fisheries Fund
- Swedish Board of Agriculture
- Aquaculture multiannual national plan