

Tackling **illegal, unreported and unregulated** (IUU) fishing

Fishing is illegal if:



- no authorisation
- against conservation and management measures by Regional fisheries management organisations (RFMO)



Fishing is unreported if:

not reported, or the reporting contravenes international, RFMO or national laws and regulations.

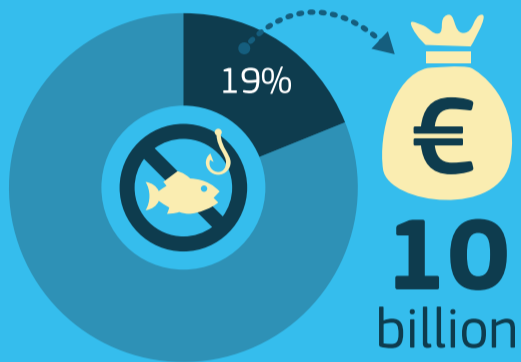
Fishing is unregulated if:

- the fishing vessel has no nationality
- fishing activities jeopardise fish stocks.

- against national laws or international obligations.



IUU fishing practices:



- €10 billion every year worldwide (estimate)
- 19% of the worldwide reported value of catches (estimate)
- serious threat to sustainable fishing
- damages the marine environment
- affects socio-economic conditions

The EU's fisheries control system:



Aims to ensure that only fish caught in accordance with applicable conservation and management measures reaches the EU market. This applies to all, EU and third countries producers.

- The "IUU regulation"**: establishing a Community system to prevent, deter and eliminate illegal, unreported and unregulated fishing - Regulation (EU) N°1005/2008
- The regulation concerning **sustainable management of external fishing fleets** - Regulation (EU) N°2017/2403
- The regulation establishing a Community control system for ensuring **compliance with the rules of the common fisheries policy** - Council Regulation (EC) N°1224/2009

Cooperation between the EU and non-EU countries:



The EU works closely with non-EU countries to promote compliance with international rules.



Why?

IUU fishing affects legitimate operators who are hit by unfair competition and threatens food security and socio-economic conditions.



Key tool

All fishery products imported in the EU must be accompanied by an EU catch certificate confirming the legality of the fishing activity.

If a third country has problems fulfilling international rules:



Thanks to this cooperation, more than 50 countries have improved their systems to fight IUU fishing

