



# **FARNET Session**

## **7th meeting of the Expert Group on the EMFF**

**FARNET Session**  
**7th meeting of the Expert Group on the EMFF**  
**10 November 2015 Brussels**

- ▶ **FARNET Support Unit 2014-2020**
- ▶ **State of Play of programming Community-Led Local Development**
- ▶ **2015 Annual Work Plan**
- ▶ **Results of needs analysis Phase 1**
- ▶ **Key elements of work plan 2016**
- ▶ **Focus on National Networks**



## Support Unit 2014 - 2020

**FARNET Support Unit**  
Gilles van de Walle

**FARNET Session**  
7th meeting of the Expert Group on the EMFF  
10 November 2015 Brussels

## ► FARNET : Fisheries areas network

- Community of people implementing CLLD (FLAGS, MA's, NN's, project promoters, DG MARE, FSU,...)

## ► FSU: FARNET Support Unit

- Central team
- Geographic experts
- Supporting the network and assisting DG MARE in implementing CLLD in fisheries and coastal areas.

Thematic & Territorial  
Coordinators

Thematic & Territorial  
Coordinators

Thematic &  
Territorial  
Officers

Team L.  
Contract M.+Deputy  
Team Assistant

Thematic &  
Territorial  
Officers

Events/ Communication  
Journalists; graphic design; website; event: Com. Coordinator

Geographical Experts + ad hoc Thematic Expertise

	MS	S. Gomes da Silva	M. Burch	C. Gobin	L. van de Kolk	U. Budzich-Tabor	J. Grieve	M. Van Soetendaele	Geographical experts
1	BG						✓		Tanya Shoumkova
2	CY		✓						Afroditi Mantzinou
3	DE			✓					Dirk Schubert
4	DK							✓	Hans Jorgen Jensen
5	EE				✓				Ahto Oja
6	ES		✓						Rosa Chapela
7	FI			✓					Petri Rinne
8	FR			✓					Thomas Binet
9	GR		✓						Afroditi Mantzinou
10	HR						✓		Visnja Jelic-Mueck
11	IE						✓		Susan Grieve
12	IT							✓	Carlo Ricci
13	LT				✓				Simona Utaite
14	LV				✓				Valdis Kudins
15	PL					✓			Ireneusz Kaminski
16	PT	✓							Miguel Gaspar
17	RO						✓		Simona Pascariu
18	SE	✓							Stig Hansson
19	SI					✓			Marco Koscak
20	UK						✓		Susan Grieve



## CLLD state of play: EFF, EMFF and other ESI Funds

**FARNET Support Unit**  
Urszula Budzich Tabor

**FARNET Session**  
7th meeting of the Expert Group on the EMFF  
10 November 2015 Brussels

- ▶ **CLLD under EFF (update on Axis 4)**
- ▶ **MS plans for CLLD under EMFF (approved or draft OPs)**
- ▶ **CLLD in other ESI Funds (analysis of Partnership Agreements and ENRD CP survey)**



# Axis 4 versus total EFF

BE	BG	CY	DE	DK	EE	ES	FI	FR	GR	HR	IE	IT	LT	LV	NL	PL	PT	RO	SE	SI	UK
26.3	75.9	19.7	146.6	133.7	84.6	1055.3	39.4	213.0	207.8	0.0	42.3	414.1	54.7	125.0	48.6	734.1	226.7	196.2	54.7	21.6	134.2
1.9	15.9	1.0	23.5	16.0	19.2	48.5	3.6	5.5	35.3	0.0	0.8	33.2	6.7	11.2	5.0	190.1	15.9	37.4	7.8	2.2	14.0
7%	21%	5%	16%	12%	23%	5%	9%	3%	17%	0%	2%	8%	12%	9%	10%	26%	7%	19%	14%	10%	10%

1.000

800

600

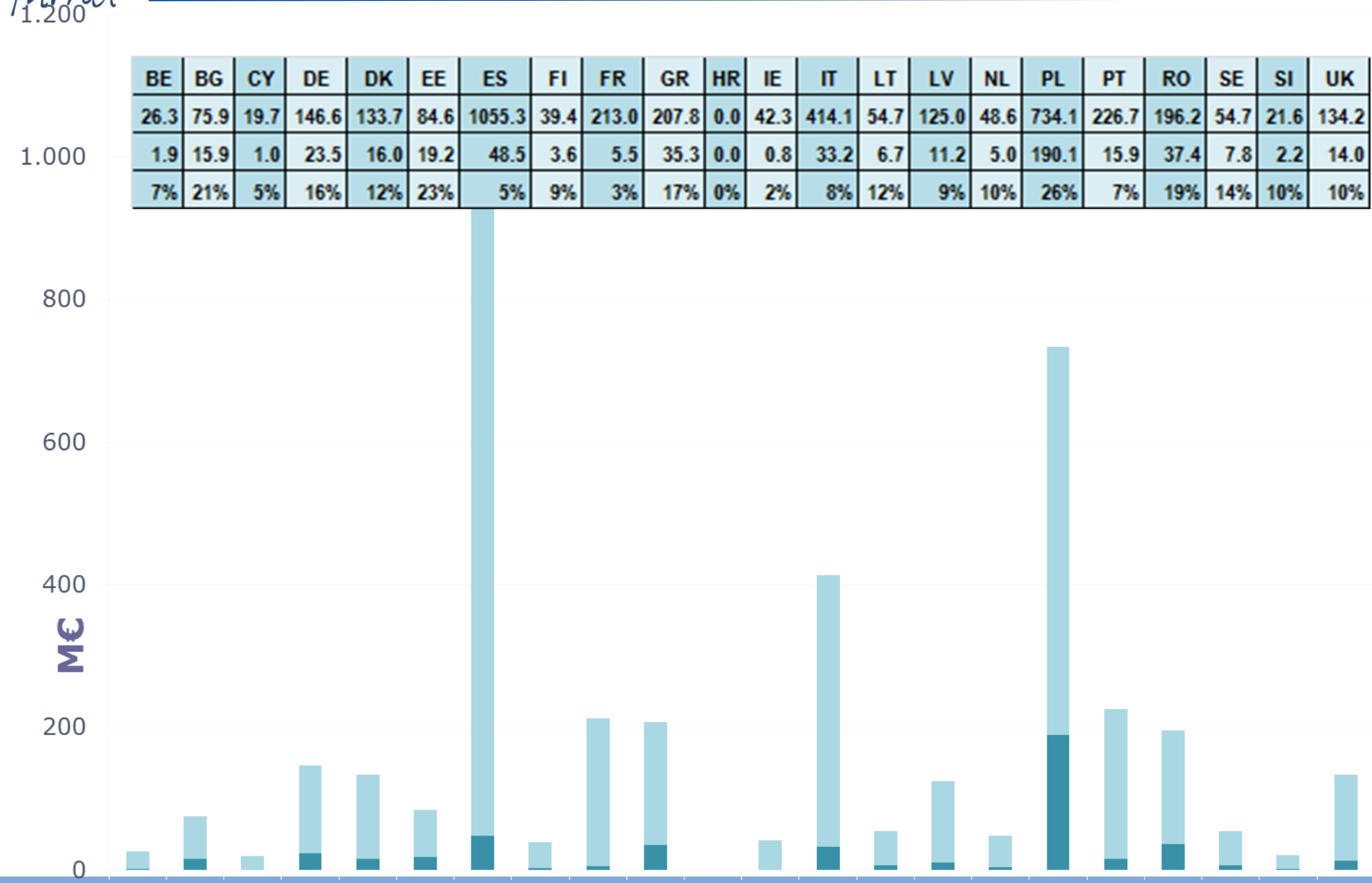
400

200

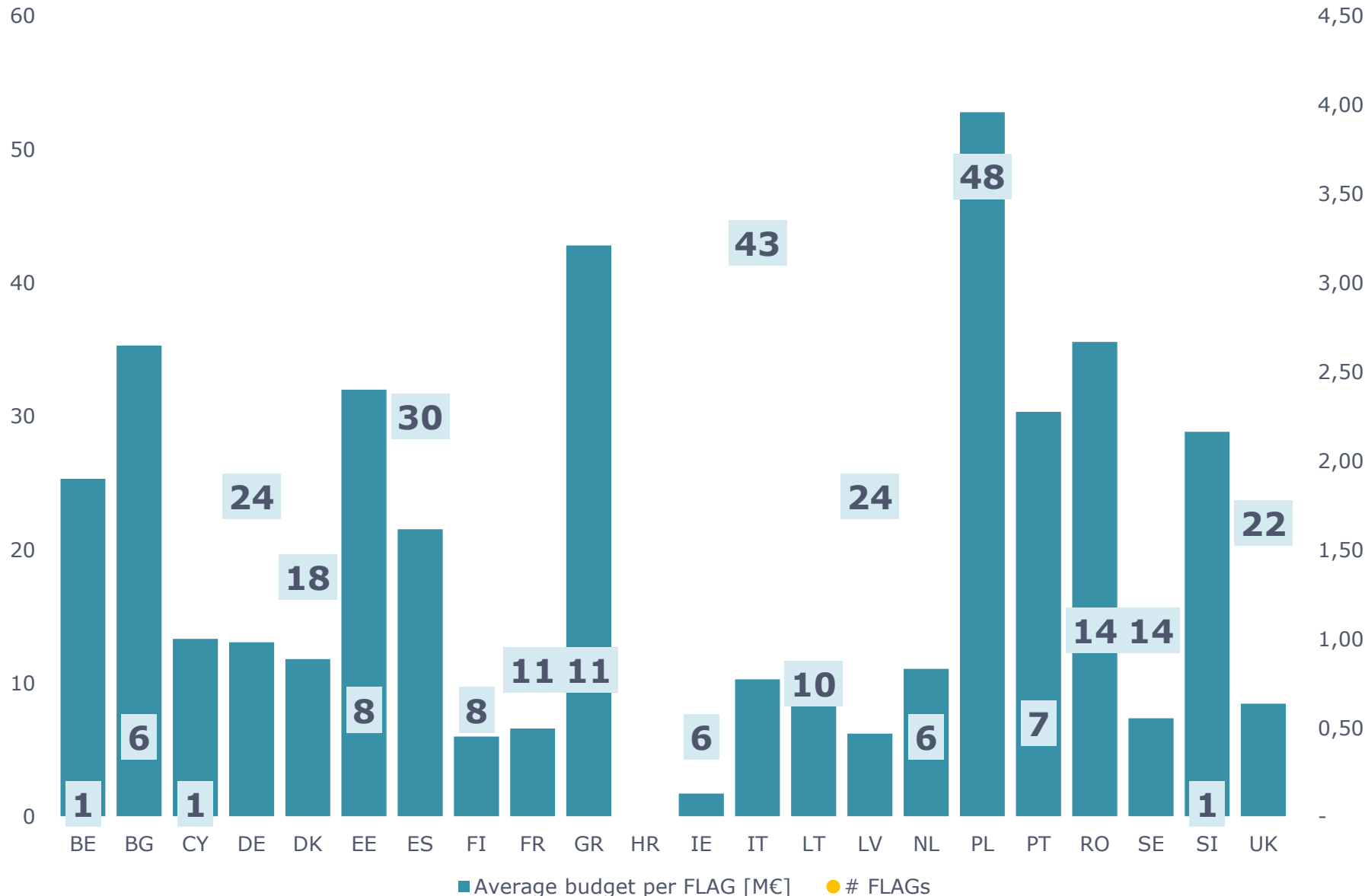
M€

0

BE BG CY DE DK EE ES FI FR GR HR IE IT LT LV NL PL PT RO SE SI UK



# No. of FLAGs and average EFF budget





# CLLD (UP4) versus total EMFF (fisheries only)

1.000

BE	BG	CY	DE	DK	EE	ES	FI	FR	GR	HR	IE	IT	LT	LV	NL	PL	PT	RO	SE	SI	UK
26.5	75.2	29.7	157.4	135.5	86.9	999.8	40.0	460.4	313.9	216.8	72.5	430.6	54.2	126.1	49.5	505.2	331.8	153.0	55.5	19.6	140.2
0.0	15.2	5.3	20.9	7.5	23.6	107.7	4.4	17.8	46.0	19.0	6.0	42.4	10.4	12.8	0.0	79.7	35.0	33.7	8.3	5.0	13.6
0%	20%	18%	13%	6%	27%	11%	11%	4%	15%	9%	8%	10%	19%	10%	0%	16%	11%	22%	15%	26%	10%

800

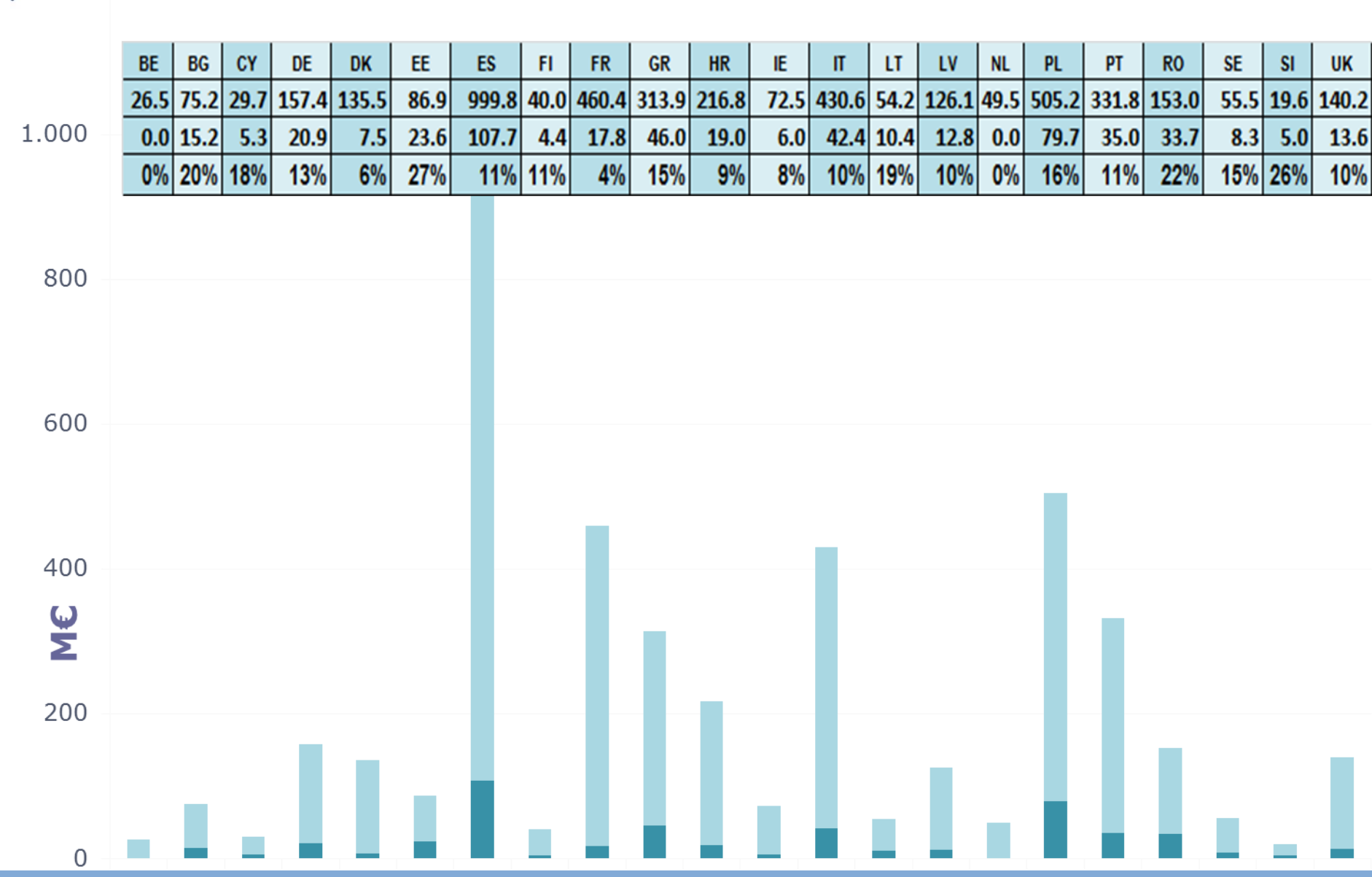
400

200

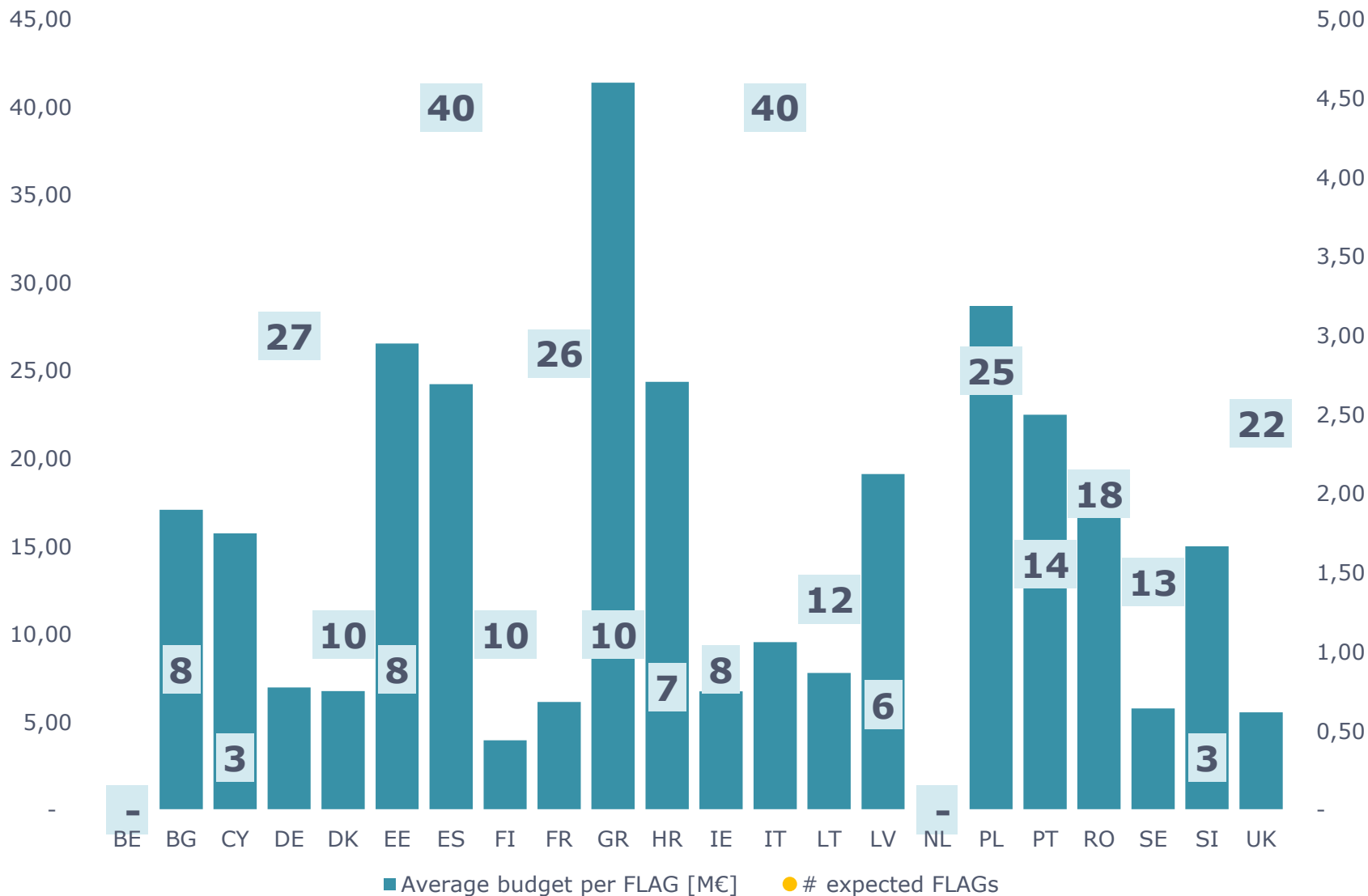
0

ME

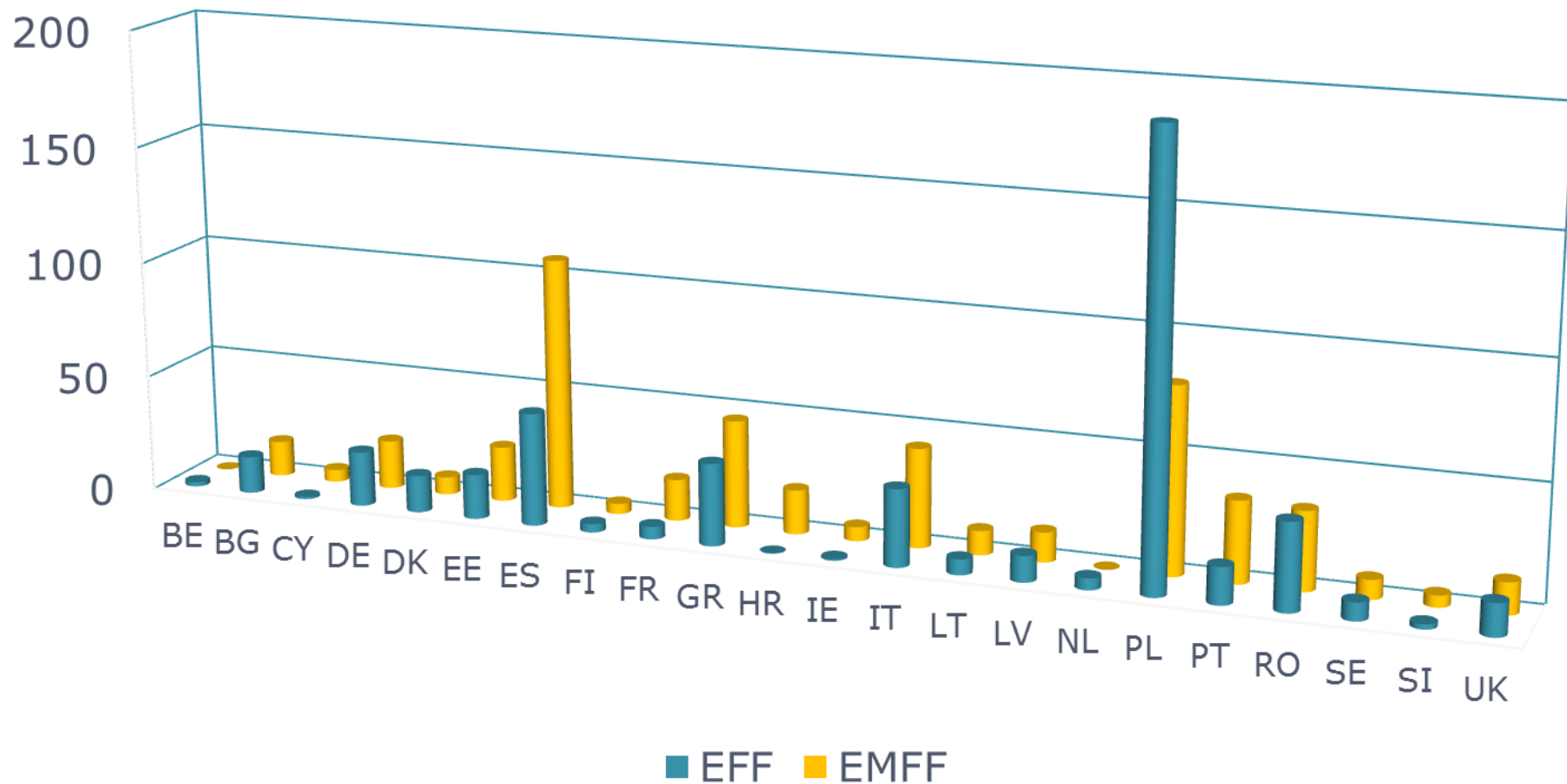
BE BG CY DE DK EE ES FI FR GR HR IE IT LT LV NL PL PT RO SE SI UK



# Expected no. of FLAGS and average EMFF budget



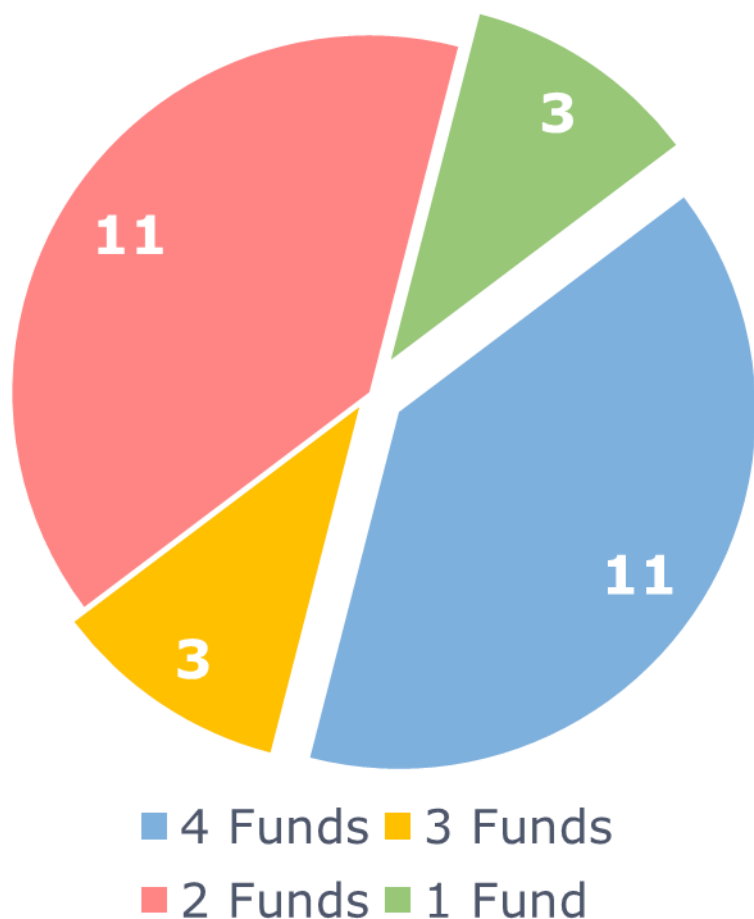
# Comparing Axis 4/UP 4 budgets



# Major changes

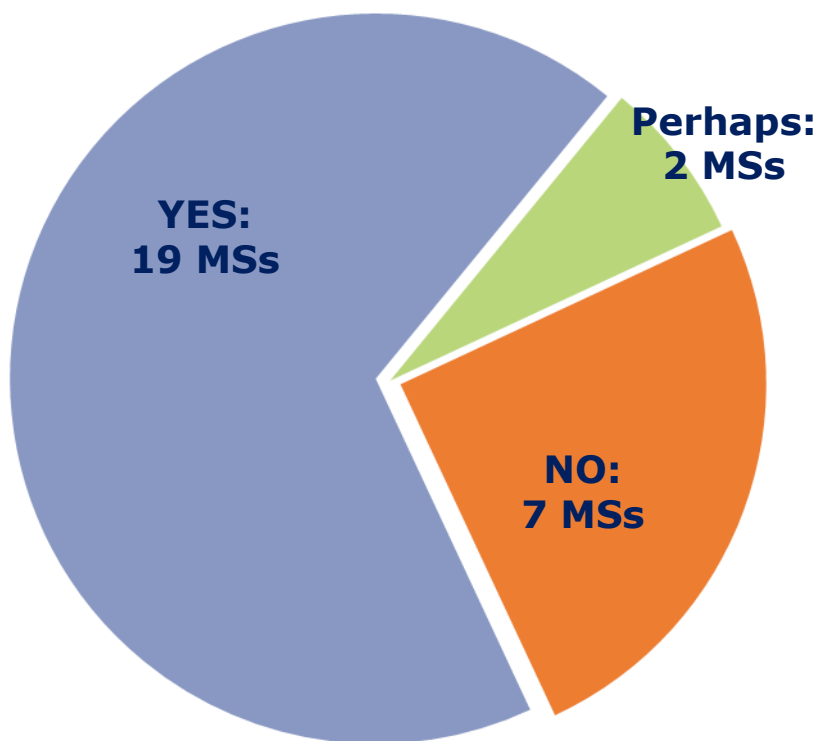
MS	% for CLLD		No. of FLAGS		Average FLAG budget	
	+	-	+	-	+	-
BE, NL		<b>none</b>		<b>none</b>		<b>none</b>
CY	<b>5% ↗ 18%</b>		<b>1 ↗ 3</b>		<b>1 ↗ 1.8</b>	
DK		<b>12% ↘ 6%</b>		<b>18 ↘ 10</b>		<b>0.9 ↘ 0.8</b>
ES	<b>5% ↗ 11%</b>		<b>30 ↗ 40</b>		<b>1.6 ↗ 2.7</b>	
FR	<b>3% ↗ 4%</b>		<b>11 ↗ 26</b>		<b>0.5 ↗ 0.7</b>	
GR		<b>17% ↘ 15%</b>		<b>11 ↘ 10</b>		<b>3.2 ↗ 4.6</b>
IE	<b>2% ↗ 8%</b>		<b>6 ↗ 8</b>		<b>0.1 ↗ 0.8</b>	
LT	<b>12% ↗ 19%</b>		<b>10 ↗ 12</b>		<b>0.7 ↗ 0.9</b>	
LV	<b>9% ↗ 10%</b>			<b>24 ↘ 6</b>		<b>0.5 ↗ 2.1</b>
PL		<b>26% ↘ 16%</b>		<b>48 ↘ 25</b>		<b>4 ↘ 3.2</b>
PT	<b>7% ↗ 11%</b>		<b>7 ↗ 14</b>		<b>2.3 ↗ 2.5</b>	
SI	<b>10% ↗ 26%</b>		<b>1 ↗ 3</b>			<b>2.2 ↘ 1.7</b>

# ESI Funds involved in CLLD (multi-funded or single-funded LAGs)



Category	MS
EAFRD, ERDF, ESF & EMFF	<b>BG, DE, ES, FR, GR, IT, PL, PT, RO, SE, UK</b>
EAFRD, ERDF, ESF	CZ, HU
EAFRD, ERDF & EMFF	SI
EAFRD & EMFF	<b>CY, DK, EE, FI, HR, IE, LV</b>
EAFRD & ERDF	AT, SK
EAFRD & ESF	NL (possibly)
Only EAFRD	BE, LU, MT

# MS planning to support multi-funded CLLD strategies

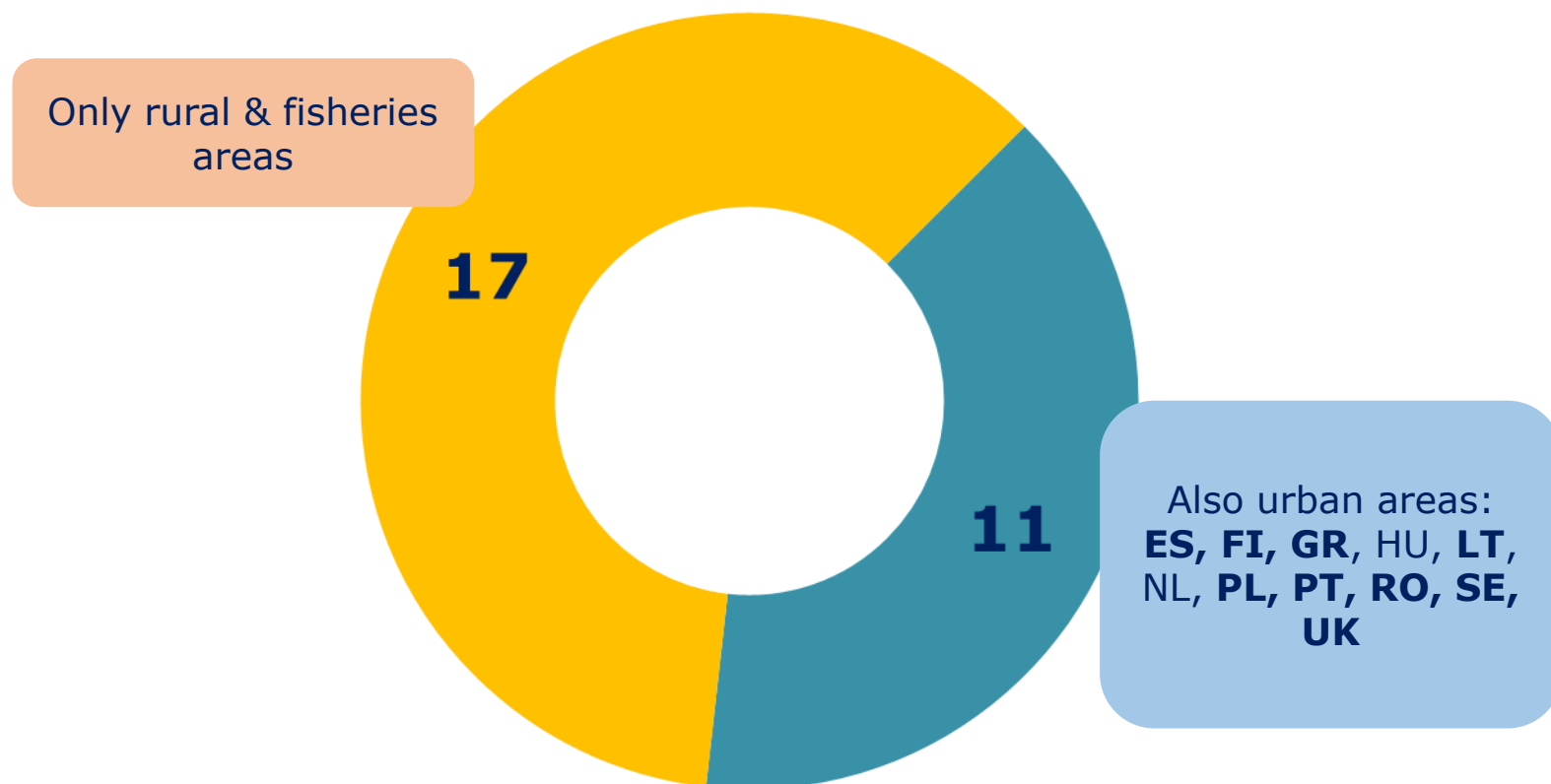


Multifunding:	MS
NOT ALLOWED	BE, EE, HR, IE, LU, MT and NL
ALLOWED	AT, BG, CZ, DE, DK, ES, FI, FR, GR, HU, IT, LT, LV, PL, PT, SE, SI, SK and UK
NOT EXCLUDED	CY, RO

Source: ENRD CP - Screening of 28 approved Partnership Agreements



# Member States where CLLD is possible also in urban areas:



Source: ENRD CP - Screening of 28 approved Partnership Agreement

## ► Measures to ensure a coordinated approach include:

- Joint MA for all CLLD Funds (SE)
- Joint body with delegated responsibilities (DK)
- Joint Monitoring Committee (UK Sc)
- Nominating a „Lead Ministry” (SK)
- National Permanent Conference (CZ)



## 2015 Annual Work Plan

**FARNET Support Unit**  
Gilles van de Walle

**FARNET Session**  
7th meeting of the Expert Group on the EMFF  
10 November 2015 Brussels

- ▶ Build knowledge and capacity in Community-Led Local development
- ▶ Identify and disseminate successful responses to key challenges for coastal, fisheries and aquaculture areas across Europe
- ▶ Ensure the flow of information among stakeholders involved in Community-Led Local Development
- ▶ Support cooperation between FLAGs and with other local development partnerships throughout Europe and beyond.

# AWP 1 key activities

---

Needs analysis (Phase 1 done, Phase 2 to start)

Communication strategy -ongoing

Multifund CLLD seminar - Dec

- ▶ **8-10 December 2015** transnational seminar specifically aimed at MAs, including MA's for other ESI Funds.
- ▶ Over **100 participants** from 22 countries
  
- ▶ **Objective:**
  - support MAs in implementing the CLLD approach and
  - foster their cooperation in ensuring the most efficient use of the ESI Funds available for integrated local development strategies
  
- ▶ **Agenda:** presentations, discussion panels, workshops and clinic sessions which will explore how best to use CLLD across the different Funds to achieve local and programme level objectives.



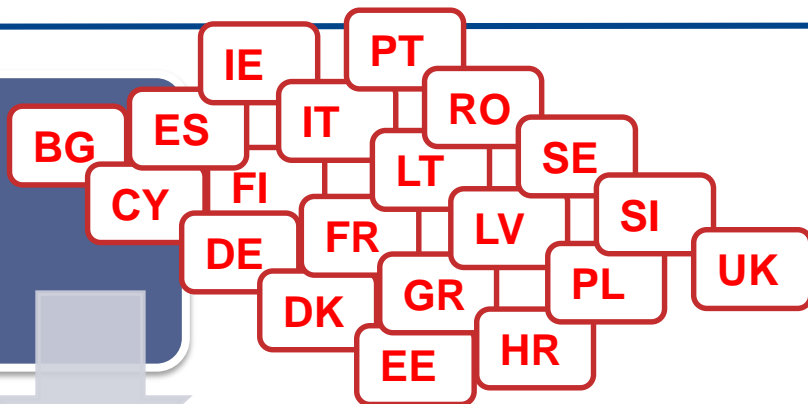
# Analysis of CLLD stakeholders needs

**FARNET Support Unit**  
Monica Veronesi Burch  
Margot Van Soetendael

**FARNET Session**  
7th meeting of the Expert Group on the EMFF  
10 November 2015 Brussels

# Needs Analysis: INTERIM report

**CLLD in MS**



**Support needs by stakeholder group**

**Prioritisation of potential support activities for 2016 and beyond**

**CAPACITY BUILDING**

**exchange of GOOD PRACTICE**

**FLAG COOPERATION**

**DISSEMINATION of information**





**DESK RESEARCH**



**SURVEYS to MA (42), NN (6), FLAG (100)**

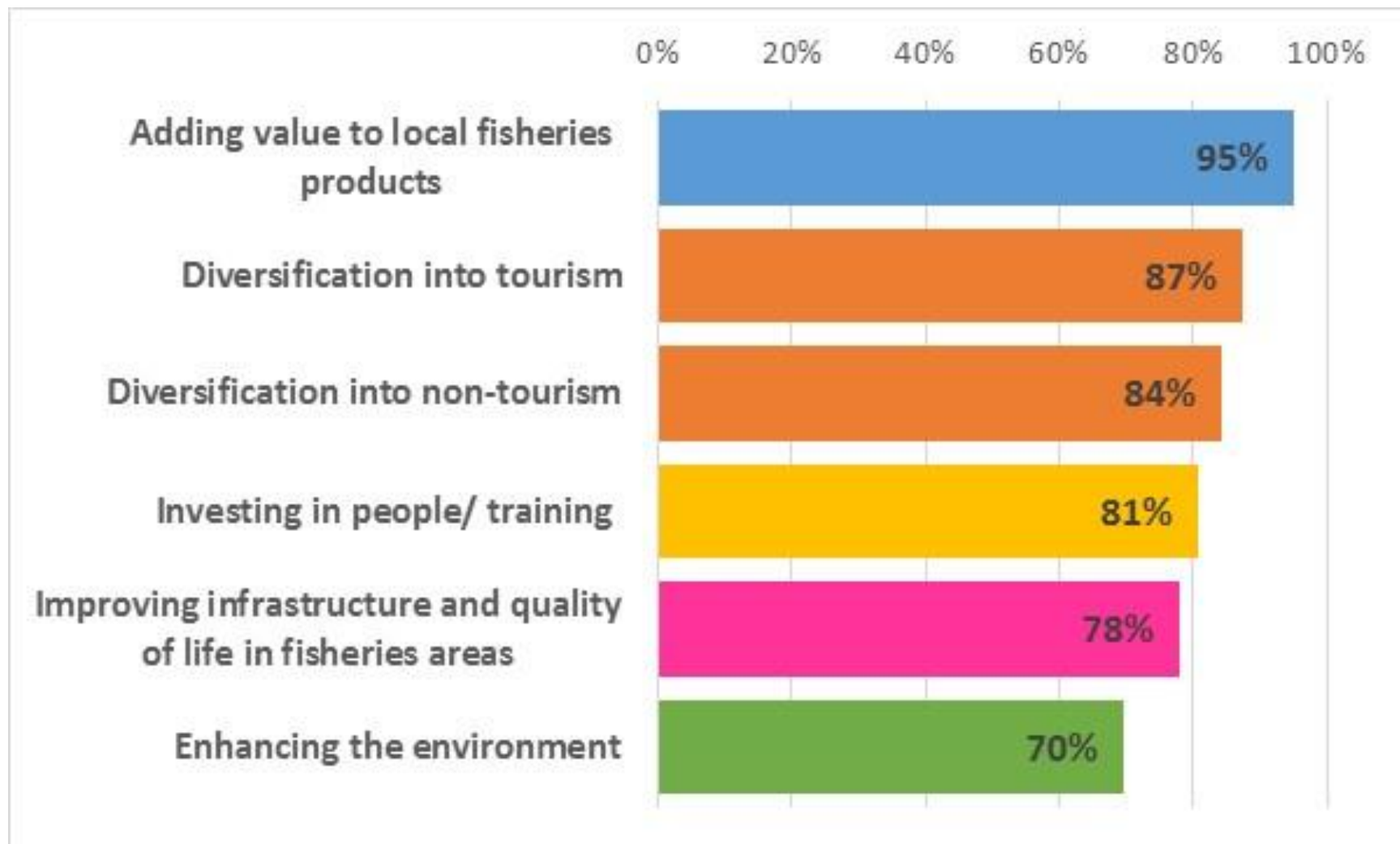


**INTERVIEWS to MA (28), NN (5), FLAG (22)**



**FOCUS GROUPS with DG MARE, FSU  
Geographical Experts**

# Thematic needs... a first insight



BLUE: fisheries    ORANGE: diversification    YELLOW: human capital    PINK: infrastructure & QoL    GREEN: environment

MA survey, September 2015

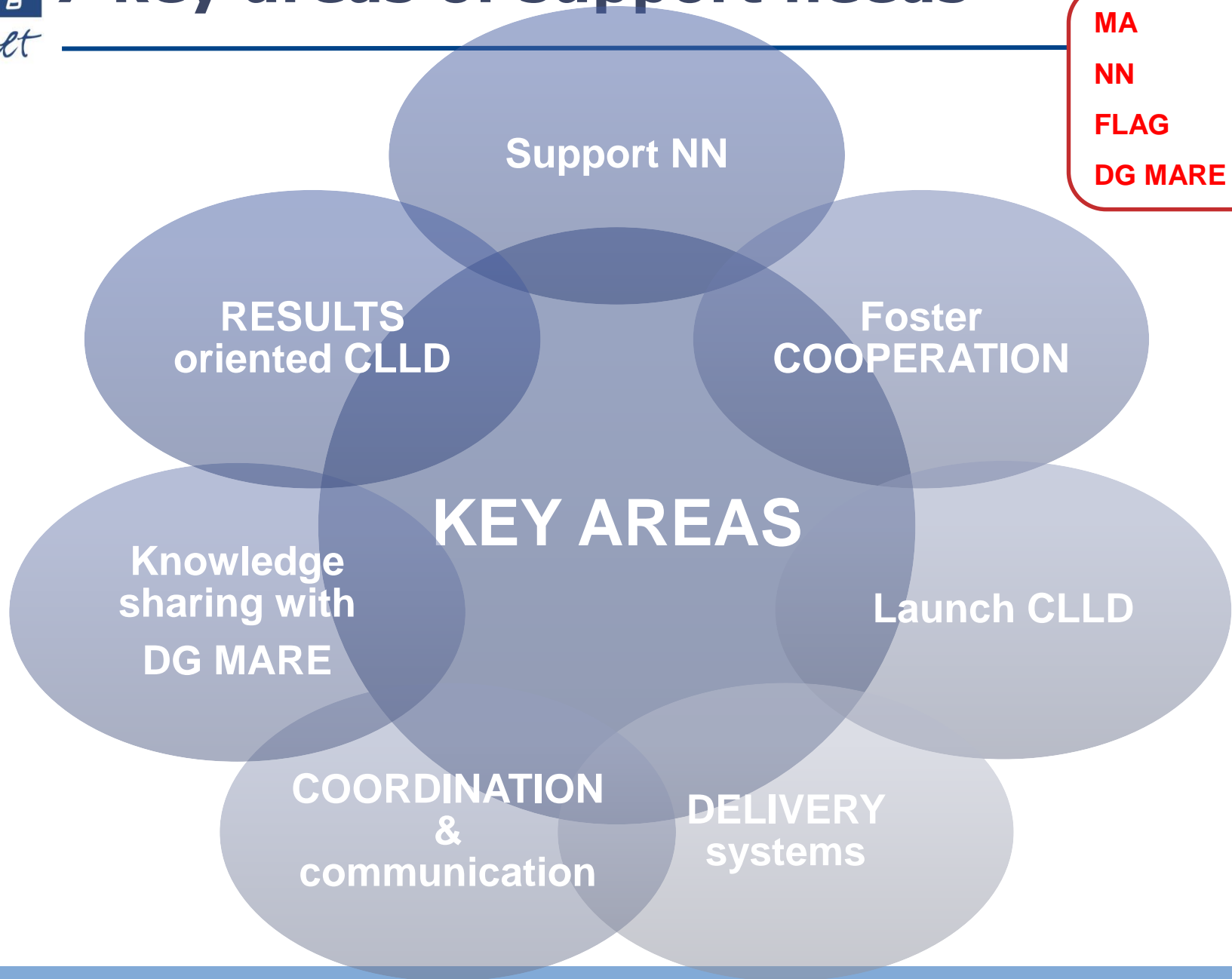
TOPIC / THEME	STATE OF PLAY				FSU support asked [%]	Written documents [%]	Meetings [%]	Exchange [%]
	Not foreseen	Foreseen but not yet started	Under development	In place				
Development of monitoring and evaluation systems	15%	36%	36%	13%	79 %	59 %	24 %	16 %
Ensuring capacity building for FLAGS	3%	59%	22%	14%	71 %	48 %	27 %	26 %
Preparation of guidance material for FLAGS	3%	49%	38%	8%	61 %	62 %	16 %	21 %
Procedures for selecting FLAGS & strategies		44%	44%	12%	58 %	57 %	21 %	21 %
Coordination mechanisms with other ESI funds	28%	38%	30%	5%	55 %	47 %	26 %	27 %
Development of administrative procedures (delivery systems)	3%	38%	58%	3%	53 %	54 %	27 %	19 %

↑  
Concerning delays!

↑  
From HIGH to LOW

# 7 key areas of support needs

- MA
- NN
- FLAG
- DG MARE



# Overview of priority needs - I



## MA meeting (with NN representatives)

- Setting up NN
- Coordination
- Foster FLAG Cooperation
- Delivery system

MA, NN



## Bilateral support / information sharing

- Set up and launch NN, support new NN teams
- Delivery system, coordination

MA, NN



## Transnational seminar

- Multi-funding (December 2015) Stakeholders of ESI Funds
- *M & E systems, result oriented CLLD*
- *Added Value to local fisheries products → fine-tune*

F  
L  
A  
G  
S



GP summary sheets: NN, Cooperation, delivery...

In-depth guide: *result oriented CLLD*

## INFORMATION sharing

- Web site
- Magazine
- FARNET Flash
- Country sheets
- FLAG fact sheets
- Q & A
- CLLD examples of MSs
- Video's
- Cooperation section
- Social media

MA  
NN  
FLAG  
DG MARE



## EXCHANGE EC desks vs FSU

- Regular bilateral contact and group meetings
- Sharing mission reports
- CLLD examples in MSs

DG MARE



# FARNET ANNUAL WORK PLAN

## 2016

**FARNET Support Unit**  
Gilles van de Walle

**FARNET Session**  
7th meeting of the Expert Group on the EMFF  
10 November 2015 Brussels

- ▶ **Strategic elements for the 2014-2020 period**
- ▶ **FARNET key priorities for 2016 and related strategy**
- ▶ **Question & answers**



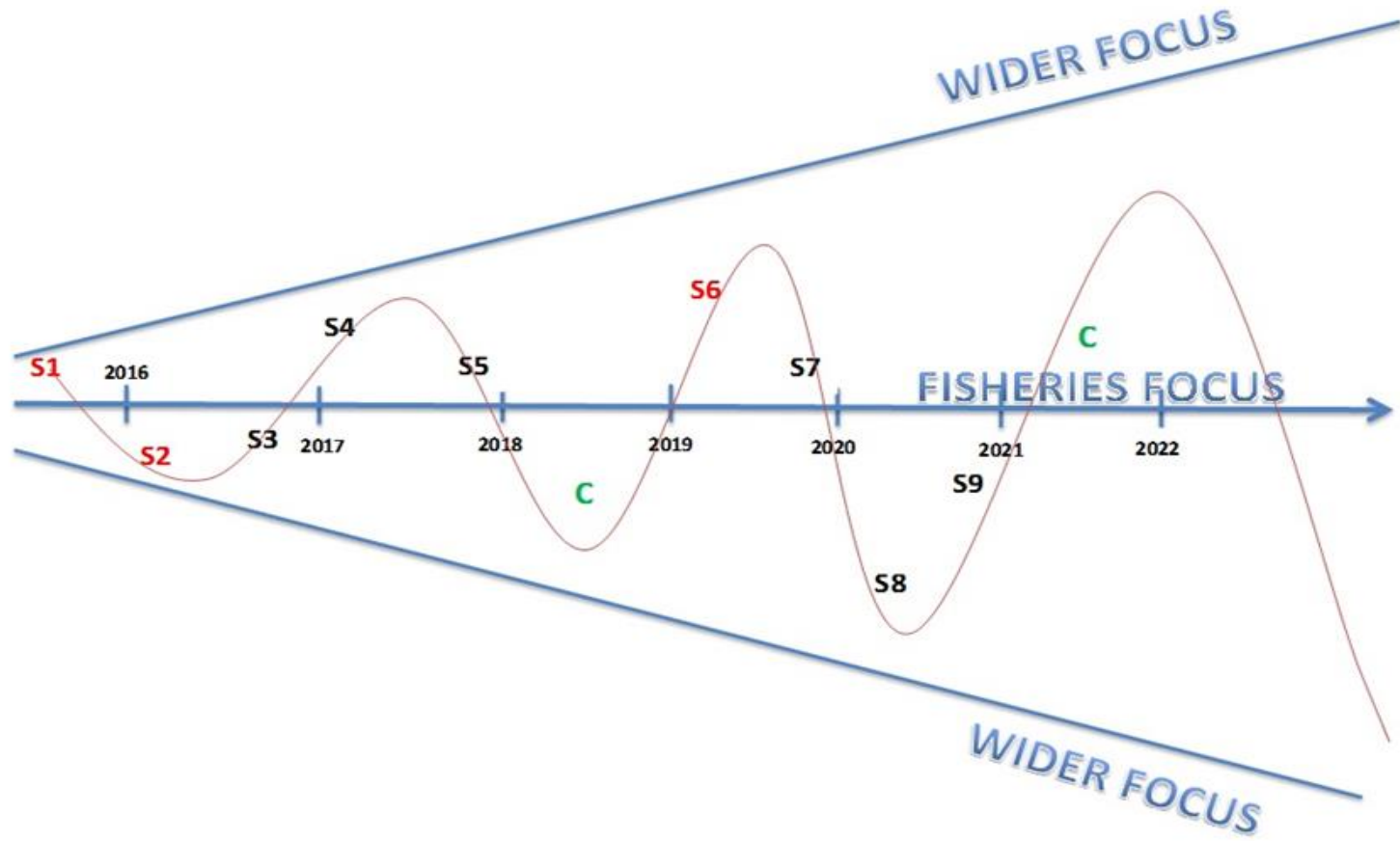
## *Capitalize on hard earned social capital of FARNET 1...*

- ▶ **more than 312 Fisheries Local Action Groups (FLAGs) were set up,**
- ▶ **11000 projects were implemented, creating or maintaining thousands of jobs;**
- ▶ **initiated a positive dynamic on shaping the future of local fishing communities.**

## *...To build thriving coastal communities by 2020*

- ▶ **Innovation, resilience and inclusion are at the heart of thriving communities;**
- ▶ **Based on FARNET 1 achievements, FLAGs are now ready to act for a prosperous future of coastal communities;**
- ▶ **They should lead coastal communities to adapt to and benefit from challenges and opportunities of a changing environment.**

*... Through an incremental approach to thematic support*



- ▶ **Achieving and demonstrating results = key for this second period**
  
- ▶ **Start to look beyond the 2020 deadline and the rationale for CLLD intervention in the future;**

- ▶ **Speeding up and improving the set-up of delivery systems**

Including improving delivery procedures, support to national networks...

- ▶ **Fostering results oriented CLLD**

Support to strategy development, monitoring and evaluation, reflection at a wider level on FARNET actions beyond 2020...

- ▶ **Laying the ground for further cooperation**

Rules and procedures for cooperation, foster cooperation projects, information on cooperation practices...

- ▶ **Dynamising local supply chains**

Add value to local product, promote innovation, biotechnology,...

- ▶ **2 transnational seminars for FLAGS (and related technical guides)**
  - S2: Result oriented CLLD
  - S3: Dynamizing local supply chains
- ▶ **2 MA/NN meetings**
  - Del. systems/ National network set up/ Monitoring and evaluation/Cooperation procedures
- ▶ **New website**
- ▶ **Publications**
  - Good practices (method., thematic/ short, long)
  - FARNET Flash
  - 1 magazine
- ▶ **Tailor made support and capacity buiding**
  - 5priority countries (ES/HR/IT/PL/RO)
- ▶ **Cooperation landscape**

2016 AWP 2 Indicative timeline												
	Y2-Q1			Y2-Q2			Y2-Q3			Y2-Q4		
	Jan	Feb	March	April	May	June	July	Aug	Sept	Oct	Nov	Dec
GE Meeting									X			
Annual Work Plan												AWP 2017
Transnational seminars (2)				Result oriented							Supply chain	
MANN meetings (2)					X				X			
Website								New website				
Electronic flash reports (10)	X	X	X	X	X	X			X	X	X	X
Magazine (1)									X			
Brochures (2)			Multi fund CLLD					Result oriented CLLD				
Cooperation												X



# National Networks: roles, objectives & activities

**FARNET Support Unit**  
Lorena van de Kolk

**FARNET Session**  
7th meeting of the Expert Group on the EMFF  
10 November 2015 Brussels



- ▶ Importance and role of the NNs
- ▶ State of play
- ▶ Priorities and support for 2016



## Why are National Networks important?

---

A key tool for effective implementation

Bring together all the stakeholders involved in the CLLD delivery

Stimulate exchange, foster innovation

Integrate local action in the wider context

Provide technical support to FLAGs

Facilitate exchange and learning

Strengthen communication between the various actors of the delivery chain

Increase the visibility of CLLD and its results



Potential activities	Member States	# of MS
Facilitating exchange of experience / good practice	EE, FI, HR, IE, LV, LT, PT, RO, SE, SI, UK	11
Supporting cooperation	BG, EE, IE, LV, PT, RO, SE, SI, UK	9
Organising & animating FLAG meetings	EE, ES, FR, IE, LV, PL, RO, SE, UK	9
Capacity building/ training activities for FLAGs	BG, EE, FI, FR, LV, RO, SI	7
Creation and/or management of website/ social media	EE, ES, FR, LV, PL, RO	6
Guidance material for FLAGs (e.g. on procedures, project selection, evaluation...)	EE, ES, FR, LV, PT, RO	6
Direct / technical support	FR, LV, LT, RO, SE	5
Dissemination/promotion of CLLD results, including outreach to the fisheries sector	EE, FR, HR, LT, SI	5
Evaluations / studies of CLLD	EE, LV, RO, SI	4
Facilitating dialogue between different delivery actors, e.g. FLAGs, IBs, PAs, MA...	ES, FR, LV, RO	4
Cooperating with other networks (rural, regional...)	FI, FR, SI	3
Visits to FLAG areas	ES, LT	2
Monitoring FLAG projects/ results	ES, SI	2
Expert advice & support for innovation	SI	1

19 out of 20 Member states will ensure networking support to FLAGS

Significant lack of information on the sort of network to be set up

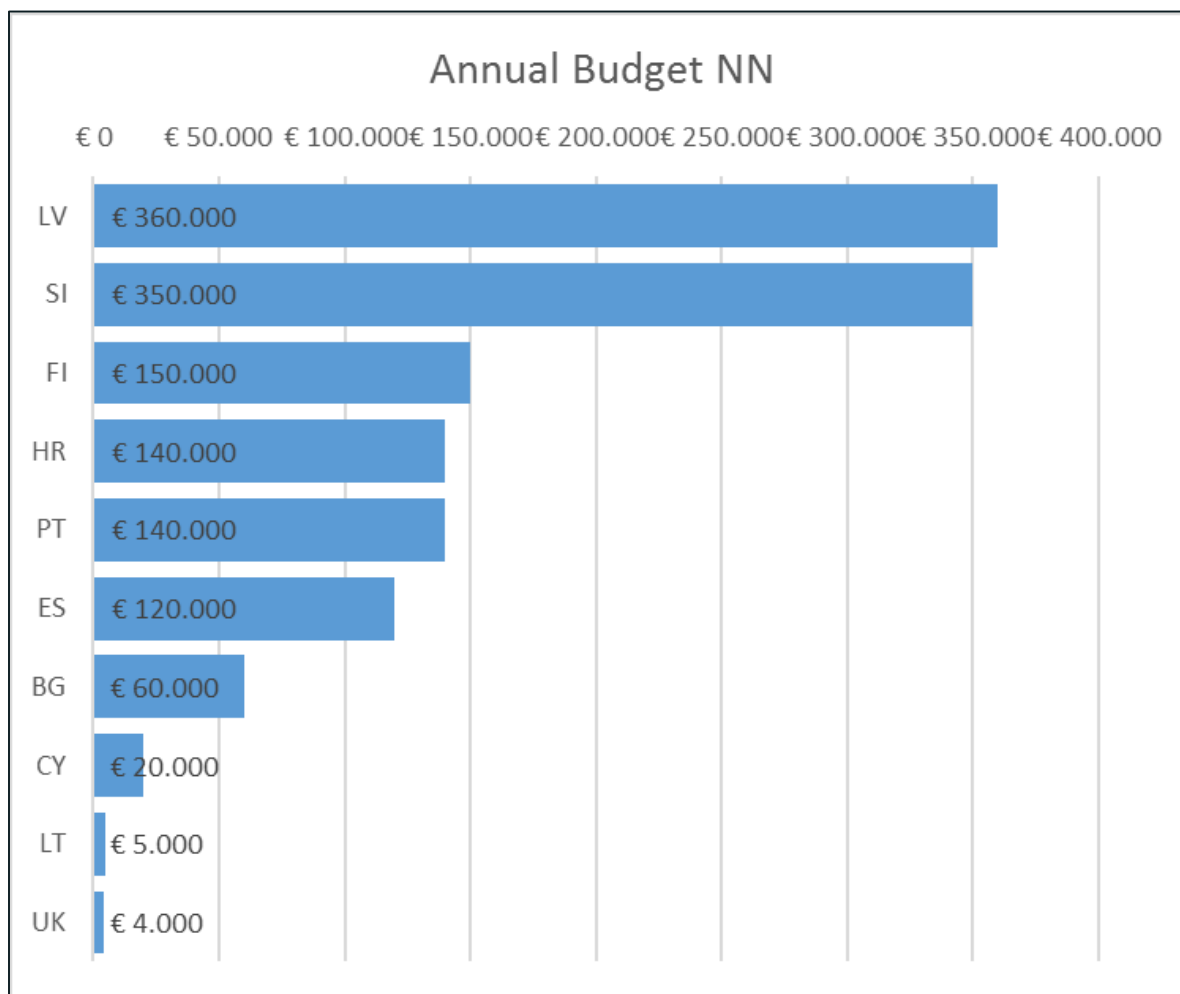
14 of the 19 expected networks will be newly set up

Hence no experience in supporting and animating FLAG work

Only 3 NNs (Spain, Latvia and Estonia) are currently operational

Staff hired to coordinate and manage the network activities

# Overview of foreseen NNs budget



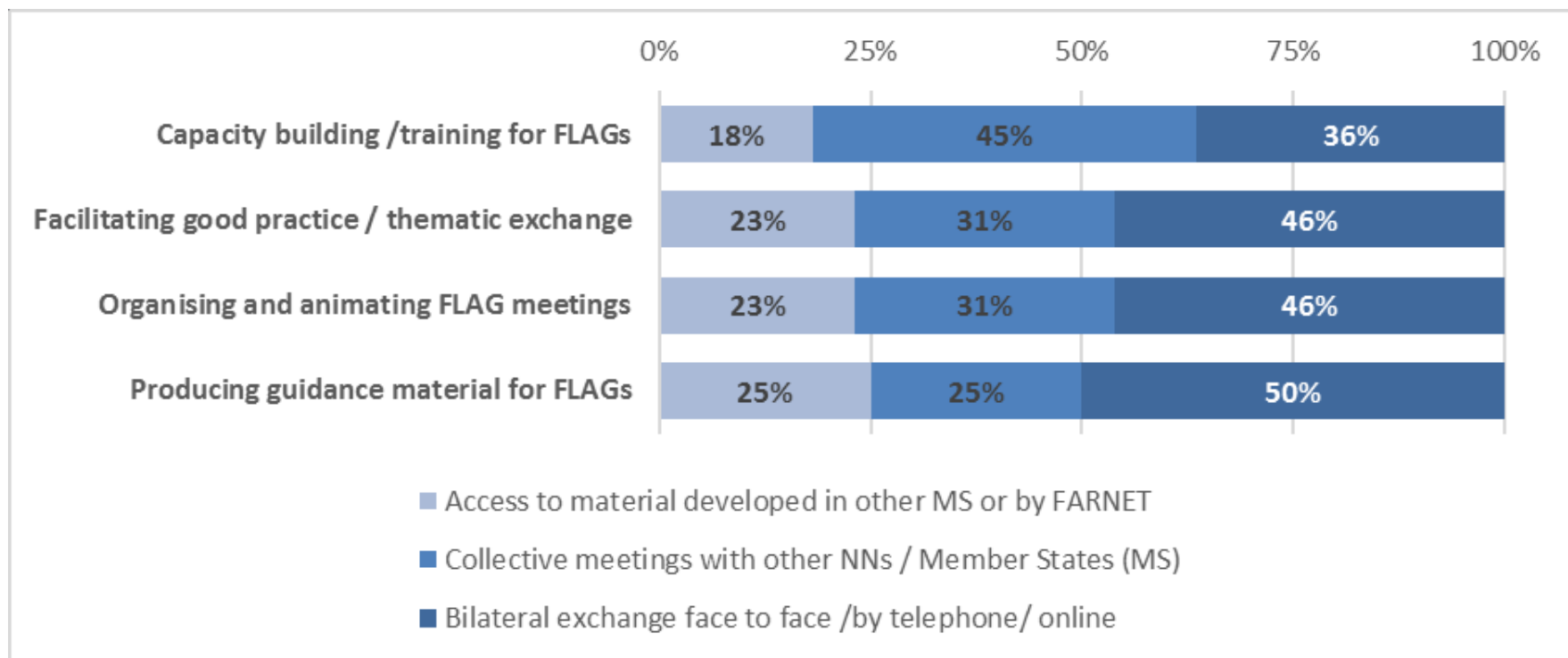
## Two clear priorities for 2016

- ▶ **Help MAs plan, design and launch their National Networks as soon as possible;**
- ▶ **Support the newly launched NN teams to be as effective as possible in delivering support to the FLAGS.**

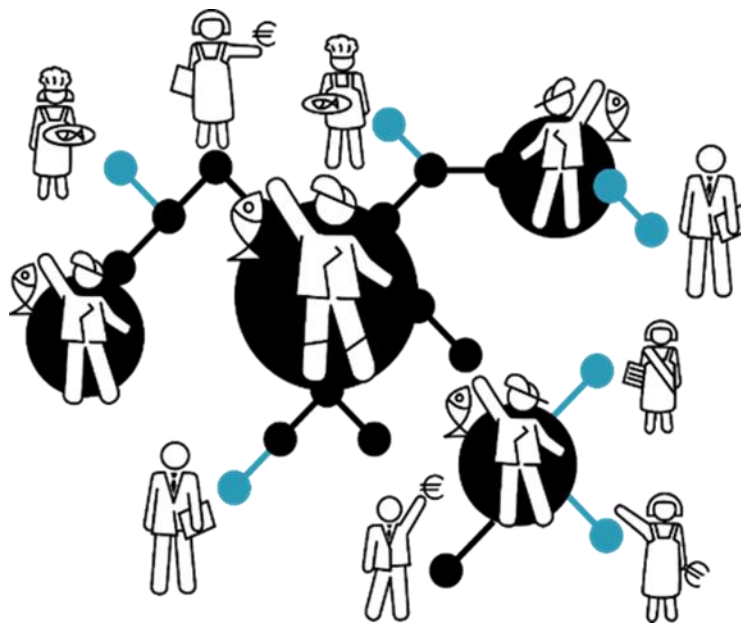


<b>Tasks for which NNs felt they would benefit from FSU support or exchange with other Member States</b>	<b># NNs= 6</b>
Providing capacity building/training for FLAGs	83%
Collecting and disseminating of Good Practices	67%
Supporting inter-territorial or transnational cooperation	67%
Organising and animating FLAG meetings	33%
Preparing guidance material for FLAGs	33%
Creating and animating a network website / social media	0%





- ▶ MA and NN meeting on cooperation
- ▶ Provision of information
- ▶ Good practice summary sheets
- ▶ Regular bilateral communication and support
- ▶ Helping NNs foster cooperation with other CLLD groups



*Thank you!*



**FARNET Support Unit**  
**38 rue de la Loi**  
**1040 Bruxelles**  
**+32 2 613 26 50**

**[www.farnet.eu](http://www.farnet.eu)**

