



FAMENET

Online Channel:
EMFAF project selection



20 November 2024, online





EMFAF project selection

FAMENET online channel



CT7.1 2024-19

The plan for today:

Introduction

EMFAF project
selection

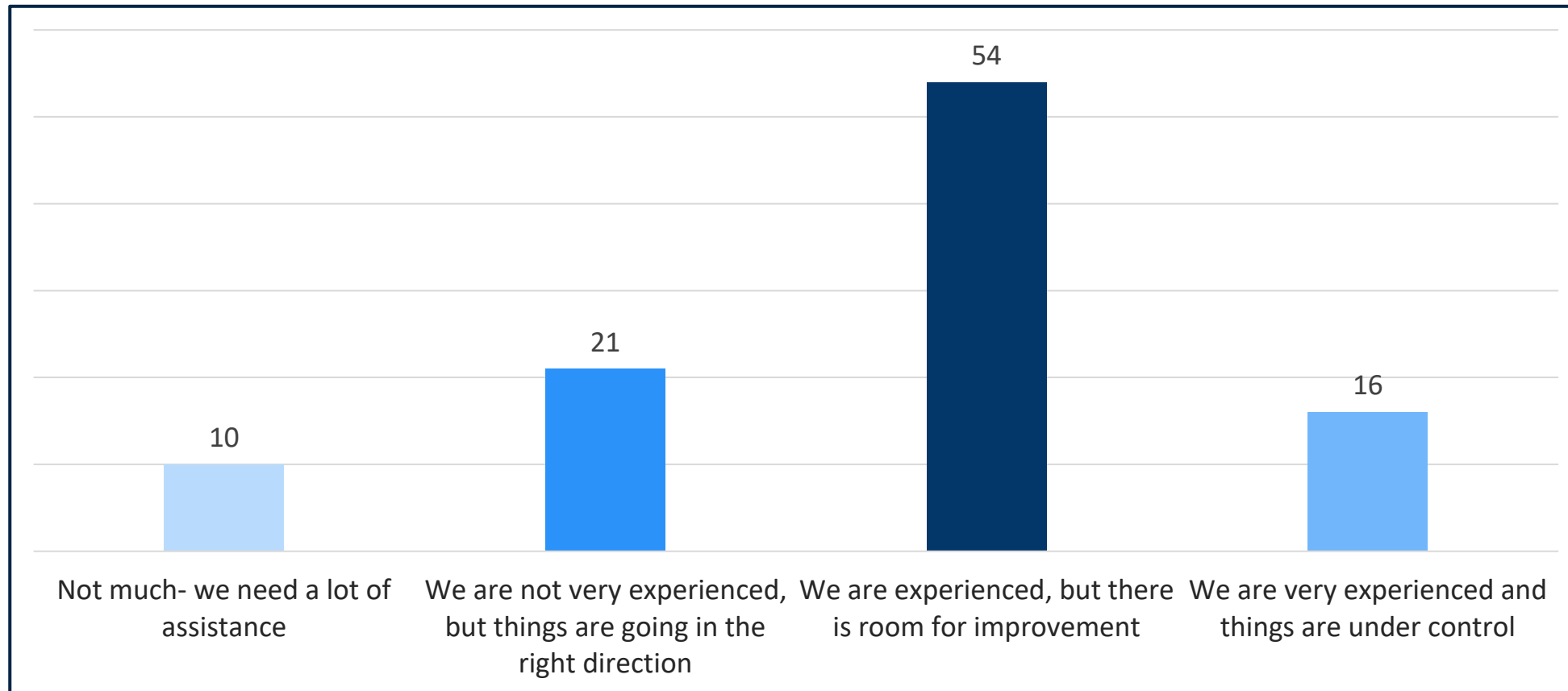
Project selection in
Germany

Project selection in
Bulgaria

Project selection in
Malta

Closing

How much experience do you have with EMFAF project selection?



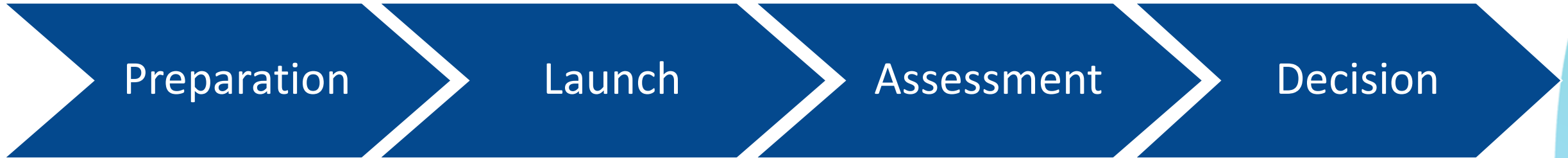
What's on your mind?



transnational cooperation
 addressing needs of sscf
 selecting cld projects
 role of evaluations
 modernisation of the fish
 e-loket n3
 objectives of activities
 modernisation of fleet
 verifying cpr article 73
 simplification
 lessons from evaluations
 projects to fulfill goals
 indicators
 networking
 scoring projects
 compliance with hencs
 assessment process
 selection process
 fisher eligibility factor
 external evaluators
 budget
 avoiding future issues
 internal vs external
 project selection
 transparency
 conflict of interest
 enabling conditions
 eligibility criteria
 checks on size of enterpr
 examples of good projects
 criteria good practices
 natural person vs groups
 eligibility of expenditur
 target non-achievement

selection criteria

Project selection milestones



Preparing for calls



- Draft call(s) outlining **specific objectives, eligible activities, eligible applicants, project criteria**
- MC's approval (CPR, Article 40)

Project criteria

Eligibility criteria - yes/no/non-applicable

- ✓ Application Form
- ✓ Eligibility of beneficiary
- ✓

Selection criteria: assessing contribution of project proposals with:

- ✓ Programme strategy
- ✓ Target groups
- ✓ Specific objectives
- ✓ Results



Project criteria

CPR, Article 73 - Selection criteria and procedures should be:

- ✓ Non-discriminatory
- ✓ Transparent
- ✓ Accessible to persons with disabilities
- ✓ Gender-equal
- ✓ Accountable to the EU Charter of Fundamental Rights



Project criteria

CPR, Article 73 (2) - Selected EMFAF projects should be:

- ✓ **Consistent** with the programme strategy
- ✓ **Contribute** to the achievement of specific objectives
- ✓ **Reviewed** to verify beneficiary resources and financial sustainability
- ✓ **Attributed** to an EMFAF type of intervention
- ✓

*Ensure that selected operations are **prioritised for maximal achievement of programme objectives!***

Project criteria, example from Greece

Non competitive

Competitive

Stage A: completeness and eligibility check

Stage B: clarity, compliance,
feasibility, maturity
Yes/no/non-applicable

Stage B: numerous applications,
similar objects, limited funds
Combination of knock-out and
ranking
e.g. environmental protection or
jobs created, location, size of
enterprise, capacity of applicant

Launching the call(s)



- **To whom?** (e.g. a limited or wide range of applicants)
- **Where?** (e.g. website)
- **How long?** (e.g. ongoing, a few months)
- **Submission tools** (e.g. online platforms, e-mail, etc.)
- **MA support** (e.g. info days, applicants package)

Assessment of project applications



- **Who?**
 - Only internal or external experts
 - Both e.g. BE- external advice (e.g. protection of the marine environment)
- **How long?** (e.g. within 3 months)
- **Odd** number of evaluators

Decision/approval of applications



- **Communication**(e.g. publication, e-mail)
- **Conditions** for approval, **deadline** for resubmission
- **Operation of strategic importance:**
MA inform MARE within 1 month and provide information (CPR, Article 73,5)

How are things going in your Member State?

www.menti.com

Code: 6945 2996





Project selection in Germany





Coffee break – back at 11:15



Project selection in Bulgaria





Project selection in Malta



How did we do today?

www.menti.com

Code: 6945 2996

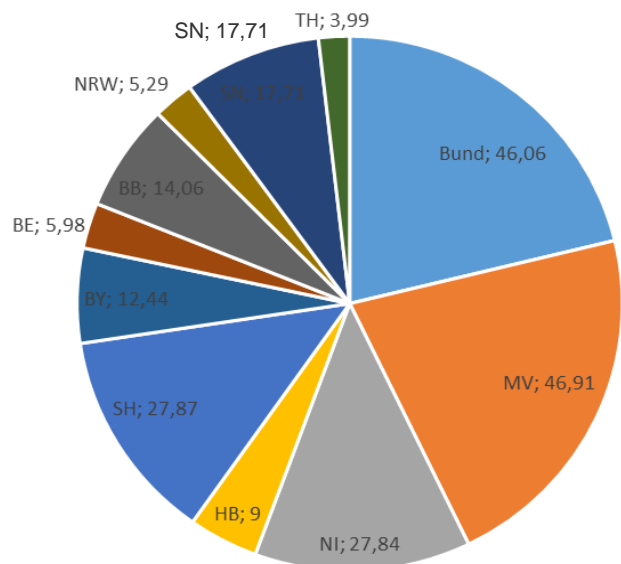


Any questions?: info@famenet.eu

EMFAF Project Selection Process and Criteria in Germany

Preliminary remarks

The managing authorities of the 10 participating federal states (“Länder”) and from the Federal Government are responsible for selecting and approving the projects.



- coastal regions and inland areas with very different requirements for funding
- 6 of the „Länder“ use CLLD – altogether 31 FLAGs
- Federal Office for Agriculture and Food and the Thünen Institute are responsible for data collection and fishery control measures (SO 1.4)

A complex German EMFAF Programme with 35 measures in 9 Specific Objectives



Kofinanziert von der Europäischen Union

Selection Process in Germany (Priority 1, 2 and 4)

Availability of funds secured

Open calls – continuous application and approval of projects

STEP 1

Fulfillment of the formal eligibility requirements

contribution to the objectives of the German EMFAF program, compliance with HEC, admissibility according to Art. 11 of the EMFAF regulation, all necessary documents are available, no double financing or overcompensation – all criteria must be fulfilled

STEP 2a

Qualitative Selection Procedure (Threshold value)

Selection criteria have been defined for each specific objective, assignment of the project to a specific objective
Evaluation based on the selection criteria using a standardized scoring system →
Applications that reach the threshold value (i. e. required amount of points) are approved

Availability of funds is limited

Closed Call - Project selection date is set

STEP 2b

Qualitative Selection Procedure (Ranking)

Approval according to ranking based on the amounts of points obtained



Selection Criteria (SO 1.2 Increasing energy efficiency and reducing CO₂ emissions by replacing or modernizing the engines of fishing vessels)

	Criteria for the qualitative assessment of the projects	Points	Weighing factors*
1.	1.1 By what percentage does the new or modernized machine reduce fuel consumption or CO ₂ emissions compared to the previous machine? a) between 20 and 25 %, b) between 25 and 30 % or c) more than 30 %.	1.1 a) 2 b) 3 c) 4	
	1.2 Does the new machine use energy-efficient technology and is the age difference between the machine to be replaced and the new machine at least 7 years?	1.2 2	
2.	Does the project concern the main engine of the fishing vessel?	2	
3.	The project involves switching from a conventional combustion engine to a) an environmentally friendly drive technology / energy source or b) an electric motor?	a) 2 b) 3	
4.	Are further investments made together with the engine replacement /modernization that improve the energy efficiency of the fishing vessel, the working conditions, safety and / or hygiene on board?	2	
5.	Is the applicant a small-scale coastal fishing company or an inland fishing company?	3	
Total Score			
Threshold value		4	

Selection Criteria (SO 2.1) Sustainable Aquaculture

	Criteria for the qualitative assesment of the projects	Points	Weighing factors*
1.	By the investment the quantity produced is a) Secured b) Increased by up to 10% c) Increased by up to 30% d) Increased by more than 30%	a) 1 b) 2 c) 3 d) 4	
2.	By the investment/compensation the income level is a) Secured b) Increased by at least 20%	a) 1 b) 2	
3.	a) The project will secure jobs b) The project will create jobs	a) 1 b) 3	
4.	Measure to prevent or reduce damage caused by predators	3	
5.	Application from a young fish farmer (< 40 years).	2	
6.	The project primarily serves to improve non-productive areas (safety, health, hygiene, animal welfare)	4	
7.	The project provides environmental services or contributes to biodiversity (incl. eco-aquaculture)	5	
8.	The investment serves to improve energy efficiency or reduce CO ₂ emissions.	5	



Selection Criteria (SO 2.1, Sustainable Aquaculture continued)

	Criteria for the qualitative assessment of the projects	Points	Weighing factors*
9.	The main purpose of the investment is to adapt aquaculture operations to climate change and increase resilience.	3	
10.	The investment serves to the introduction/implementation of an innovation by a company	4	
11.	Company size –The applicant company is a a) microenterprise b) small enterprise	a) 2 b) 1	
12.	The applicant submits an application for support from the EMFAF for the first time	1	
13.	The project is of overriding interest to the sector additional points if the project has the following priorities contribution a) to the sector's adaptation to climate change, b) to the more efficient use of resources and/or reduction of environmental impacts in the sector, c) to development and introduction of innovations, d) to the improvement animal health e) to establish/improve predator management.	5 a) 4 b) 3 c) 2 d) 2 e) 1	
Total Score			
Threshold value		4	



Selection Process in Germany (Priority 3, CLLD)

STEP 1

Precondition for approval of local development strategies

transparent selection procedures, objectives of the LDS are consistent with the program objectives of the EMFAF

STEP 2

Qualitative Selection Procedure

Closed calls - the FLAG decision-making body assesses the projects for funding on the basis of the selection criteria. The selection is documented.

STEP 3

Eligibility Requirements

The other eligibility requirements are checked by the granting bodies to which the application, including the documented decision of the FLAG, is submitted.

For compensation payments - no qualitative selection procedure

for environmental services, temporary or permanent cessation of fishing activities and compensation for damage caused by predators uniform eligibility requirements and funding obligations have been defined, on the basis of which a compensation amount has been calculated.

Individuals and Organisations involved in the Selection Process

- Specialist authorities are included in the assessment of formal eligibility (e. g. coherence with the German program for the EMFAF).
- **The qualitative selection procedure is done by the implementing bodies** defined in the EMFAF management and control systems of the participating Federal States and the Federal Office for Agriculture and Food.

Challenges

Setting up the system for our complex programme took us about 1 year, in particular

- defining criteria, which are objective and measurable and allow a transparent evaluation,
- combining open and closed calls,
- taking into consideration feedback from the Commission on draft versions and reconciling this feedback with the approach taken (selection at the level of the SO, not type of measure).

Findings up to today: Selection methodology and criteria

- provide for continuous application and approval within the scope of available funds,
- ensure-rapid implementation of projects and ensures a prompt decision and rapid availability of the funds for the applicant. These are decisive factors for time-sensitive measures (e.g. disease control, prevention of damaged caused by predators), but also for investment projects (validity of offers, price increases).
- Discussions at the EMFAF Monitoring Committee meetings revealed that there have been no problems with the application to date.



Kofinanziert von der
Europäischen Union

Project selection process in Bulgaria step by step



Ministry of Agriculture and Food



Legal framework

CPR

Art. 73: MA shall establish and apply criteria and procedures which are non-discriminatory, transparent...

National
legislation

**Law on the management of EU funds
under shared management**

MA control
system

**Management and control system
Chapter 4.2 Project selection**



Step by step:

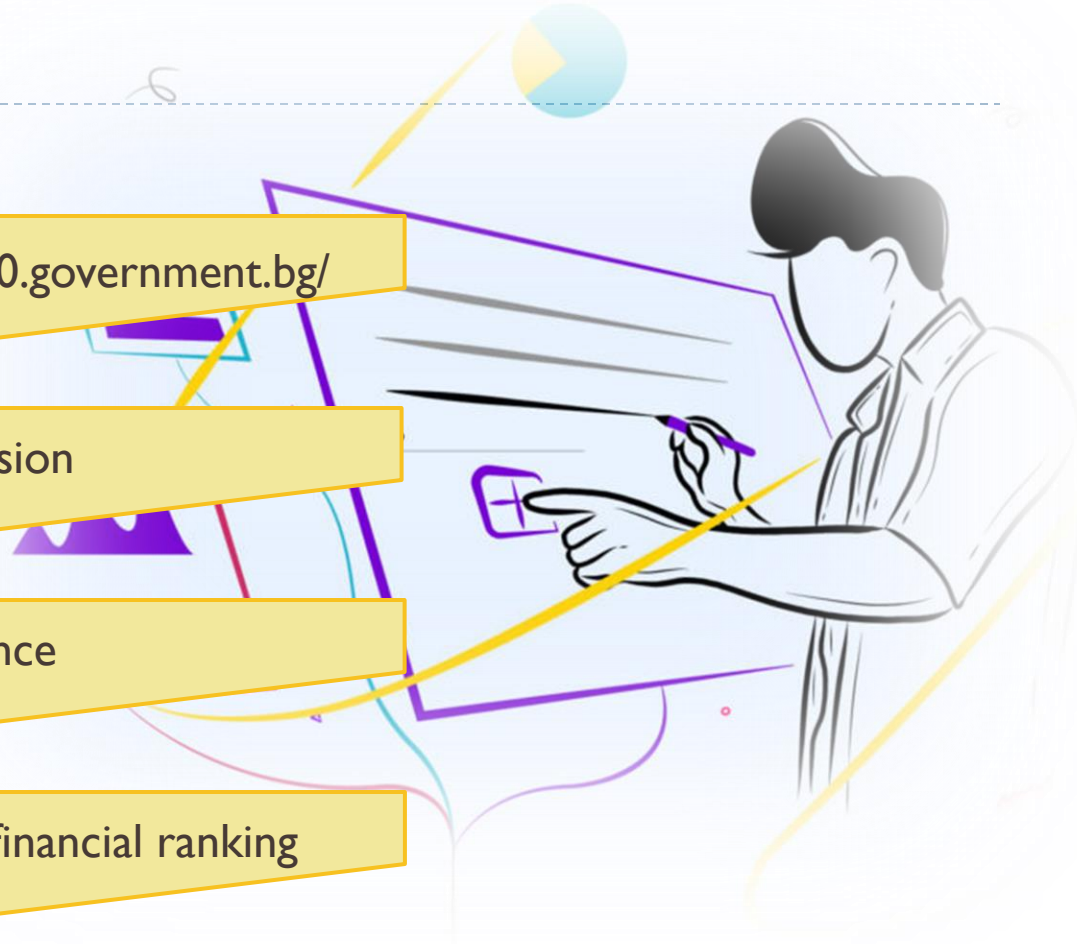
Project application <https://eumis2020.government.bg/>

MA Evaluation commission

Eligibility and compliance

Selection criteria compliance and financial ranking

Contract with the beneficiary



Evaluation commission within 14 days

- ▶ Chair
- ▶ Secretary

No right to select projects, only administrative function

- ▶ Odd number of evaluators (at least 3 persons) - MA officials or external
 - ▶ Reserve committee members (at least 3 persons)
-

The 4 eyes principle

Each project proposal is checked by 2 evaluators independently on each step of the assessment

Evaluation deadline – 3+1 months



Eligibility and compliance

Performing checks for:

- Eligibility of the candidate
- Eligibility of the actions applied
- Corrections of the budget may be applied (if necessary)

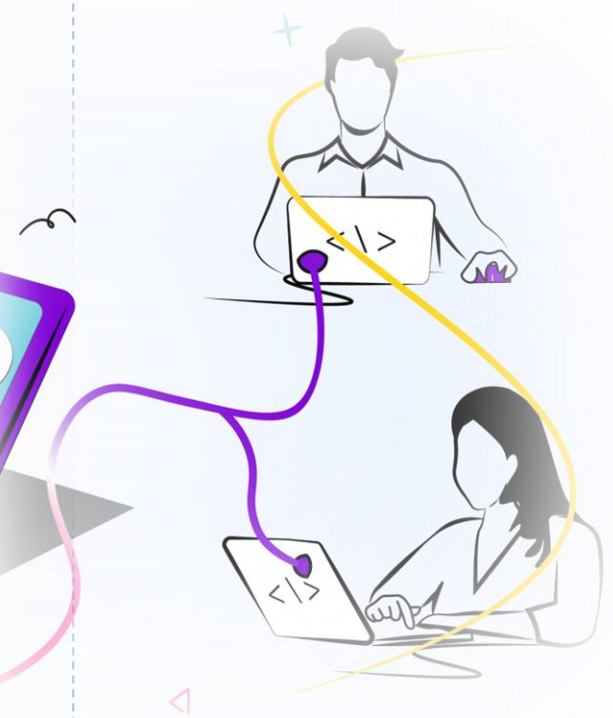
Ineligible project proposals are rejected

The rejected candidates have the right to appeal to MA

MA reviews the rejected project proposal

Confirm rejection

Return to project selection



CPR Art. 40 (2) The monitoring committee shall approve the methodology and criteria used for the selection of operations.

Each criteria has weight coefficient in points.

The set of criteria for each ToA has minimal threshold

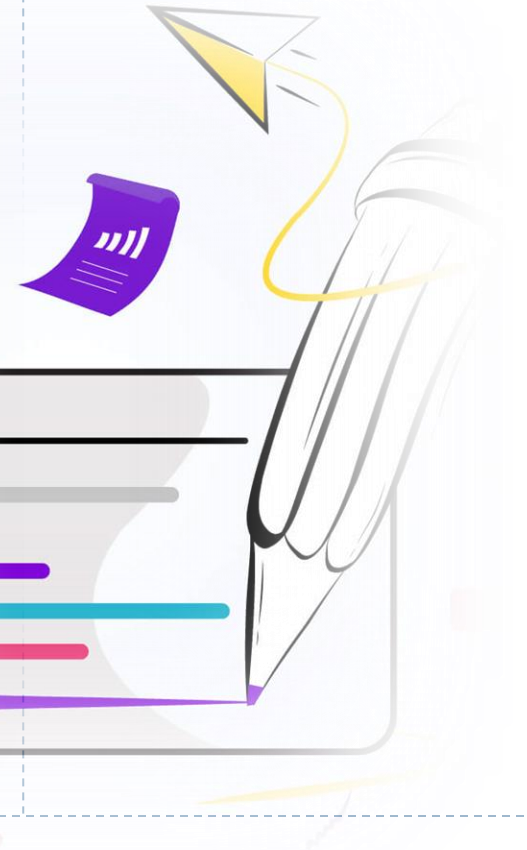
Technical and Financial assessment (Selection criteria)

Projects are ranked according to the points earned in descending order

If the project doesn't pass the threshold

↓
rejected

The projects are funded in the order of ranking until the budget is covered.



Example: Permanent cessation of fishing activities

Call budget 2 MEUR

5 project proposals for total 2,5 MEUR

Eligibility

90 days at sea for the last two years
No serious infringements
Unbalanced fleet segment

Selection criteria

Max. 80 p.

Threshold 40 p.

Age of the vessel:

10 - 15 years - 10 p.

16 to 25 years - 20 p.

Over 25 years - 30 p.

Activity above the min. fishing days:

At least 20% - 10 p.


21% - 40% - 20 p.

Over 41% - 30 p.

Vessels under 12 m - 20 p.

Vessels over 12 m - 10 p.

Ranking:

	Points	Budget	
1.	80 p.	1000 000	
2.	80 p.	250 000	
3.	70 p.	500 000	
4.	60 p.	250 000	
<hr/>			
5.	50 p.	500 000	reserve

Call
budget
2 MEUR

The Evaluation commission comes out with an Evaluation report

Head of the MA

Approves the Evaluation report

14 days

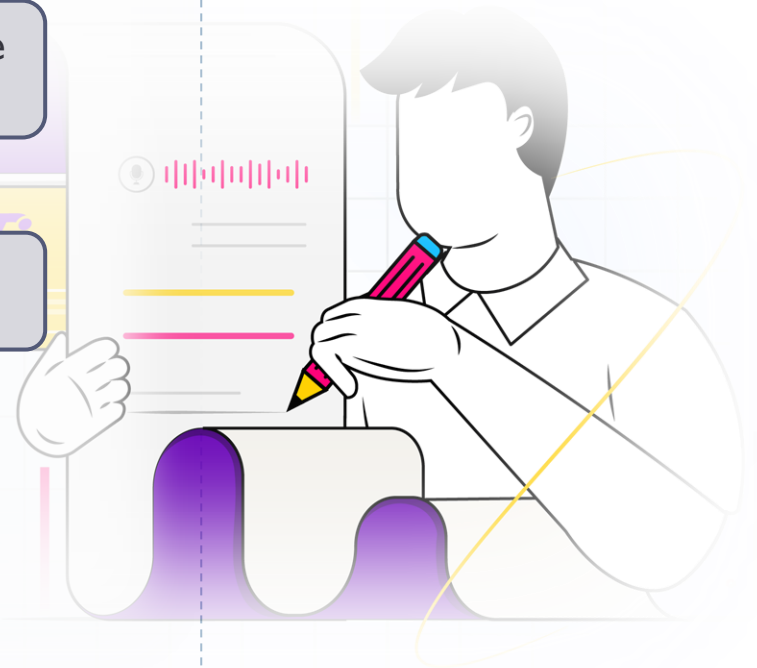
Invitation to candidates to sign contract

Doesn't approve the Evaluation report

New evaluation

Signing of contracts

Contracting



Questions?



Ministry of Agriculture and Food





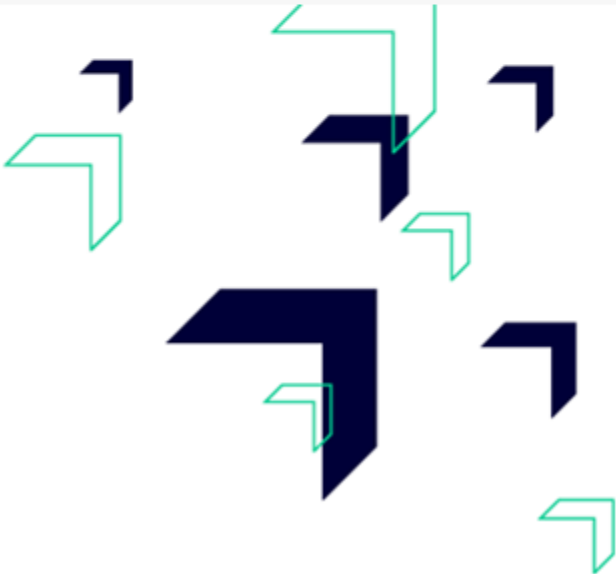
GOVERNMENT
OF MALTA



FONDI.eu

EMFAF Project Selection – Malta

20th November 2024

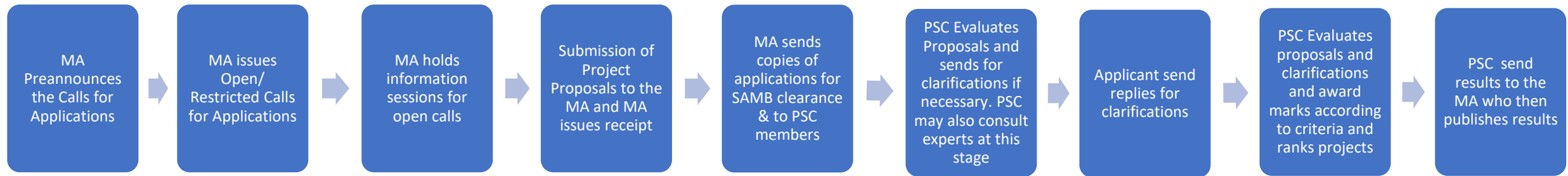


Co-funded by
the European Union

Responsibilities of the MA: Selection of Operations

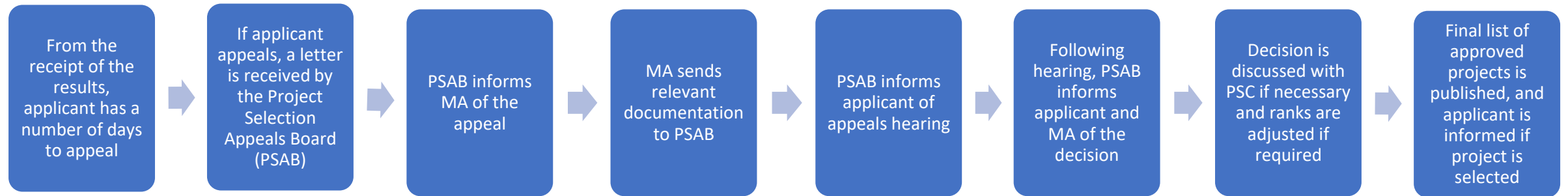
- Draw up appropriate selection procedures and criteria
- Ensure that a selected operation falls within the scope of the Fund
- Ensure that the beneficiary is provided with a document setting out the conditions for support
- Satisfy itself that the beneficiary has the administrative, financial and operational capacity before approval of the operation
- Satisfy itself that, where the operation has started before the submission of an application for funding to the managing authority, applicable law relevant for the operation has been complied with;
- Ensure that operations selected for support do not include ineligible activities

Project Selection Committee: PSC



A Grant Agreement is signed between the MA and successful applicants

Project Selection Process (PSC): Appeals during PSC



A Grant Agreement is signed between the MA and successful applicants

Project Selection Committee Mandate

The Project Selection Committee (PSC) is tasked with the assessment and evaluation of project proposals, following the approved methodology and criteria established by the Monitoring Committee for this programme, as defined in accordance with Article 40(2)(a) of Regulation (EU) No 2021/1060. The Managing Authority is responsible for ensuring that the selection process aligns with the obligations specified in Article 73 (1) and (2) of Regulation (EU) No 2021/1060.

Functions of the PSC

The main functions of the Project Selection Committee for projects include:

- a. Assess and evaluate in adherence to the fundamental principles of good governance, accountability, transparency and efficiency.
- b. Assess and evaluate the proposals submitted in line with the objectives of the Fund, Partnership Agreement, Programme.
- c . Determine the eligible proposals that can proceed to the selection process, following an assessment in line with the criteria approved by the Monitoring Committee.
- d. Rate and rank projects in line with the criteria as established above.

In specific thematic areas the PSC will need to take note of additional eligibility requirements as specified in the OP

Members of the PSC

The Project Selection Committee (PSC) is constituted by a Chairperson, and/or its designate as the Alternate Chairperson, and other members. All committee members are nominated representatives appointed by the Government.

The PSC is empowered to request technical guidance from subject matter experts during its project assessment process. These consultative organisations/individuals are selected based on their ability to offer valuable insights that enhance the committee's comprehension of the project proposal.

Technical experts are called upon as necessary as advisors and do **not** hold any voting rights.

Secretariat of the PSC

The function of the Secretariat to the PSC will be provided by the Managing Authority.

The Secretariat's responsibilities include:

- a. Organisational and administrative support in relation to PSC meetings.
- b. Drawing up the Agenda of the PSC meetings.
- b. Keeping of the minutes of the meeting.
- c. Any other tasks as assigned by the PSC.

Project Eligibility and Selection Criteria

The criteria for the selection of mainstream projects are divided as follows:

- Eligibility Criteria which consist in a gateway assessment which ensures that all applications have reached a minimum standard.
- Selection Criteria which are designed to assess the fit and contribution of project proposals with the Programme's strategy, its target groups, and its objectives.

Eligibility Criteria

- Application Form
- Eligibility and Remit of Beneficiary
- Capacity of Beneficiary
- Beneficiary in Compliance with Common Fisheries Policy Rules
- Project Implemented within the eligible territory
- Verification of co-financing (where applicable)
- Status of Operation
- Compliance with EMFAF Revaluation
- Project Leader from beneficiary Organisation

Selection Criteria

Criteria	Marks
The proposed project maximises the contribution to EU key priorities as expressed in the programme objectives and expected results	20 marks
Contribution of the project to the programme types of action, interventions and Member State Obligations and commitments	20 marks
Potential of the project to enhance innovation and partnership in the sector	5 marks

Selection Criteria

Criteria	Marks
Contribution towards indicators beyond minimum	10 marks
Readiness	10 marks
Project Sustainability and Cost Effectiveness	10 marks

Selection Criteria

Criteria	Marks
Horizontal principles – Fundamental rights, Equal opportunities, non-discrimination and accessibility	5 marks
Sustainable Development	10 marks
Quality of application form	5 marks
Complementarity	5 marks

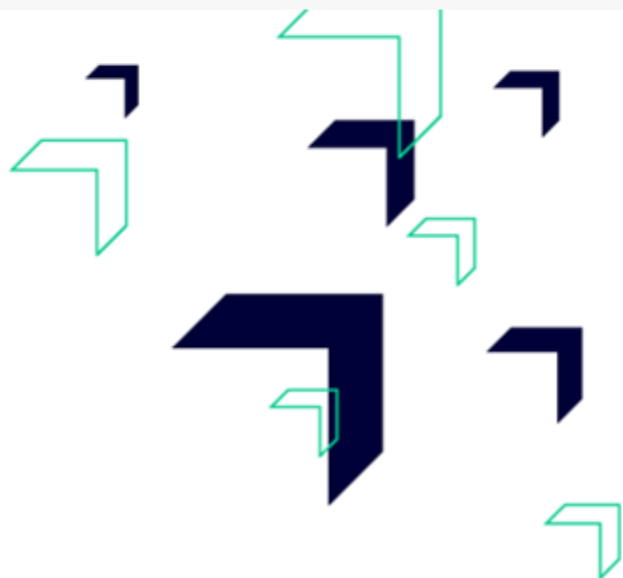


GOVERNMENT
OF MALTA



FONDI.eu

Thank you !



Co-funded by
the European Union