

European Maritime and Fisheries Fund (EMFF)

Romania

Romania – overview

Coast, lakes and ports

Situated in south-east Europe, Romania has a coastline 256 km long, which represents 5.3 % of the total Black Sea coastline and 0.5 % of the total coastline of EU-23 coastal Member States.

The total length of inland waters in Romania for inland fishing is more than 7 000 km², or about 3 % of the total area of the country ⁽¹⁾. The Danube has a total length of 1 074 km in Romania, corresponding to about 3 430 km² and holding an average of about 2 230 million m³ of water. The most important inland fisheries of Romania are centred here.

The main ports used by fishermen for landing catches are Mangalia, Olimp, Costineşti, Mamaia and Cape Midia. However, Romania has no specialised fishing ports on the Black Sea.

Tradition and potential

According to the 2014 Romanian Fleet Report, Romania has 158 registered vessels, of which 123 are active. Due to the small size of the Romanian fishing fleet, the European Fisheries Fund (EFF) financed the reduction of the fishing fleet, with 15 fishing vessels (596.43 GT and 1 734.69 kW).

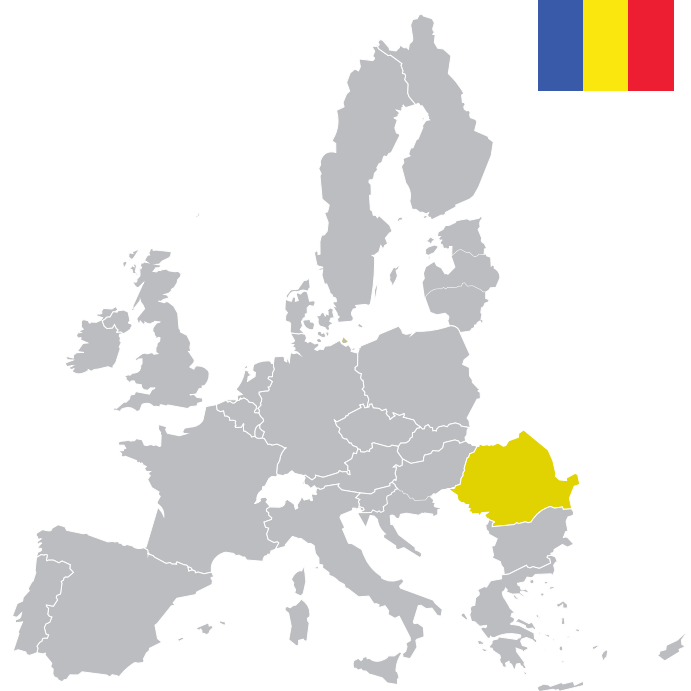
According to the Romanian EMFF OP in 2012, 1 679 inland vessels were registered for commercial fishing. The number of authorised fishers corresponding to these registered vessels was 3 115, of which 50 % were from the Danube areas.

The species composition of landings during the period from 2001 to 2011 includes 36 species of fish, molluscs and crustaceans. In the Black Sea, the most important target, pelagic fish species, are European sprat, Mediterranean horse mackerel and anchovy. Demersal fish species with commercial importance are turbot, gobies and pickled dogfish. Due to the increasing commercial value of molluscs in the last decade, rapa whelks may also be included in this list.

Economic performance and employment

Economic fisheries performance: In 2012, the number of fishing enterprises in the Romanian fleet totalled 91, with the vast majority (79 %) owning a single vessel. Only 18 % of enterprises owned between two and five fishing vessels. Total employment in 2012 was estimated at 471 jobs. Employment levels dropped between 2008 and 2012, by 48 %.

Economic aquaculture performance: The Romanian aquaculture sector produced 10 005 thousand tonnes of fish in 2012, an increase of 27 % from 2009. In 2012, more than 900 licenses were issued for aquaculture farms, and were distributed to around 430 enterprises. In 2015, the number of registered farms increased to 518. The Romanian aquacul-



ture sector is dominated by small enterprises with fewer than 5 employees, accounting for 65 % of the Romanian sector in 2012. In total, 2 968 persons were employed in the Romanian aquaculture sector in 2012.

(Marine) aquaculture: With only one mussel farm offshore in the Black Sea and one onshore turbot farm, marine aquaculture is underdeveloped. The mussel farm produces 20 tonne/year, and had a turnover of EUR 15 000 in 2012.

Economic processing performance: In 2013, the Romanian processing industry (i.e. 11 units) registered a drop in the number of productive enterprises, as compared to 2011 (i.e. 22 units). The number of employees reported has likewise decreased, from 1 181 to fewer than 780 employees. The distribution of fish processing companies in the sector reveals that 50 % of companies have between 11 and 49 employees, 36 % have 50 to 249 employees and 14 % have ≤ 10 employees.

Economic importance of coastal areas: Around 4.53 % of Romania's total population (i.e. 900 000 persons) live in coastal areas ⁽²⁾, though the employment rate in these regions is only 50 %. The main employment sectors are tourism, transport and fisheries.

(1) <http://www.fao.org/docrep/009/t0798e/t0798e09.htm>

(2) http://ec.europa.eu/eurostat/statistics-explained/index.php/Maritime_economy_statistics_-_coastal_regions_and_sectoral_perspective

Romania's Operational Programme



Budget

Total (EU + national):
€223 709 082

EU contribution:
€168 421 371
(2.9 % of the total EMFF)

The Operational Programme (OP) covers the six 'Union Priorities' defined in the EMFF, namely:

1. promoting environmentally sustainable, resource-efficient, innovative, competitive and knowledge-based **fisheries**;
2. fostering environmentally sustainable, resource-efficient, innovative, competitive and knowledge-based **aquaculture**;
3. fostering the implementation of the **Common Fisheries Policy (CFP)**;
4. increasing **employment and territorial cohesion**;
5. fostering **marketing and processing**;
6. fostering the implementation of the **Integrated Maritime Policy (IMP)**.



1. Fisheries

What?

The total weight landed by the Romanian fleet in 2013 was 1 500 tonnes of seafood, with a landed value of EUR 1.46 million ⁽³⁾. Considering the structure of catches in Romania at the level of 2012, a significant increase was registered in the rapana whelk (*Rapana venosa*), of up to 588 tonnes, which represents 70 % of the total marine production.

There are quotas for two Black Sea species: turbot and sprat. In 2015, the quota for sprat was 3 500 tonnes and for turbot, 43.5 tonnes.

Commercial fishing in internal waters is carried out mainly on the Danube River, the Danube Delta, the lagoon Razim-Sinoe, the Prut River and the dam lakes on the Rivers Siret and Olt. In 2013, 3 094 tonnes production was registered, falling from 6 045 tonnes in 2006. The main species fished are carp, pike, horse mackerel, catfish and perch.

OP aim

EMFF funding will help improve infrastructure for:

- modernisation of fishing infrastructure: ports, landing sites, shelters
- adding value to unwanted catches
- counselling services
- collection of marine litter
- increased gear selectivity
- development of complementary activities /new forms of income.

Through further improving the port infrastructure, with EMFF support, Romania aims at improving the **quality, control and traceability** of products landed.

Romania also aims to invest in improving the selectivity of fishing gear, as well as to ensure a balance between **fishing capacity and fishing opportunities**.

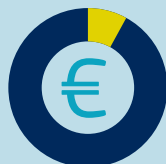
Considering the small size of the Black Sea fishing fleet, the decline in stocks and the importance of protecting the Danube Delta biosphere, Romania will also focus on the **development of complementary activities for fishers**.

Key result

Environmentally, economically and socially sustainable fisheries.

Budget

€17.87 million
(7.98 % of the OP allocation)



2. Aquaculture



What?

The country's land resources and availability of inland waters provide perfect conditions for the development of aquaculture.

In the EMFF OP, Romania underlines that there are currently 518 aquaculture farms in Romania, 114 of which were financed under the EMFF, creating an additional production capacity of 17 855 tonnes/year.

In 2012, the largest share in total aquaculture production was held by freshwater species, mainly cyprinids, at 89 % (European cyprinids: 4 455 tonnes; Asian cyprinids like silver carp, bighead carp and grass carp: 4 378 tonnes), and only 11 % by other species such as sturgeon, European eel and trout. Trout represents 10.7 % (1 074 tonnes), and the marine species and sturgeon only 0.3 % (9.18 tonnes), in total production.

With only one mussel farm offshore in the Black Sea and one onshore turbot farm, marine aquaculture is underdeveloped, leaving a lot of scope for investment under the EMFF.

OP aim

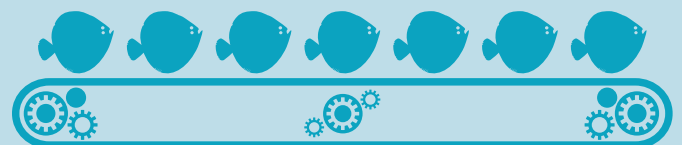
EMFF funding will support the production of the aquaculture species in line with market demand. Support is also foreseen also for aquaculture providing environmental services.

Key objective

By 2023, the production volume of aquaculture production is expected to increase by an additional 8 000 tonnes, contributing to food supply, environment protection and employment.

Budget

€112.34 million
(50.21 % of the OP allocation)



⁽³⁾ https://stecf.jrc.ec.europa.eu/documents/43805/1034590/2015-07_STECF+15-07+-+AER+2015_JRCxxx.pdf

3. Common Fisheries Policy (CFP)



What?

The National Agency for Fisheries and Aquaculture in Romania will be responsible for the collection and management of data, for supporting the monitoring, control and procedure of data collection and for the implementing Union control.

OP aim

The CFP sets out rules for managing European fishing fleets and conserving fish stocks. Romania implements them by:

- improving and supplying scientific knowledge;
- collecting and managing of data;
- supporting, monitoring, control and enforcement.

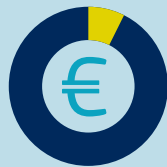
Key result

EMFF funding will support the collection, management and use of data required in the frame of CFP as well as the implementation of Union control, inspection and enforcement system as required by the CFP.

Budget

€16.4 million

(7.34 % of the OP allocation)



4. Community-led local development strategies



What?

During the 2007-to-2013 programming period (and for the first time), Romania supported local development through a bottom-up approach, financed by the EFF. Fourteen Fishing Local Action Groups (FLAGs) were set up, but only 12 became operational. Most of them are in the riparian and coastal areas of Romania. Despite the late start, implementation of local development strategies improved towards the end of 2015, promising to make a difference for their areas under the EMFF.

As a Romanian specificity, CLLD funding for the Danube Delta will contribute to the wider integrated territorial development strategy implemented in the Danube Delta Region. The Integrated Territorial Investment (ITI) instrument will be used with the contribution of all European Structural and Investment Fund (ESIF) 2014-2020 programmes, in an area consisting of 38 local government units in the Danube Delta Biosphere Reserve, Tulcea County and north of Constanta County.

OP aim

EMFF funding will help increase employment and territorial cohesion in fisheries-dependent areas by:

- diversifying activities;
- promoting social well-being and cultural heritage;
- enhancing and capitalising on environmental assets.

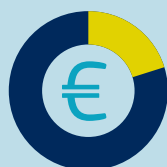
Key result

Help fishing areas and communities that depend on fisheries to diversify their economies and add value to their fishing activities. Romania also intends to increase the number of FLAGs to 18.

Budget

€44.91 million

(20.07 % of the OP allocation)



5. Marketing and processing



What?

In 2013, Romania had 11 processing units registered with fish processing as their main activity, a decrease from 14 units in 2012. The sector is generally dominated by small processing units with a maximum of 10 employees (71 %), while only 29 % have a higher number of employees.

The processing sector uses 12 % of the domestic supply of fish, while 88 % of its fish supply is from imports.

The total turnover of the fish processing industry in 2012 registered a drop, due to a constant decrease in the number of units having fish processing as a main activity, from EUR 44.5 million in 2011 to EUR 30.4 million in 2012. The net profit increased to above EUR 25 million in 2012.

OP aim

EMFF funding will be invested in new or improved products, processes, technology, management systems, and marketing measures for fisheries and aquaculture products.

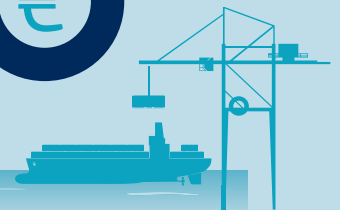
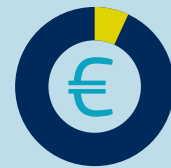
Key result

The processing sector will be modernised and made more competitive, through development of new products and acquisition of new markets.

Budget

€15.39 million

(6.88% of the OP allocation)



6. Integrated Maritime Policy (IMP)



What?

The IMP seeks to provide a more coherent approach to maritime issues, with increased coordination across different policy areas. The Black Sea is a unique ecosystem, determined by its specific geographical and hydromorphological conditions.

OP aim

EMFF funding will help foster the development and implementation of the programme of measures under the Marine Strategy Framework Directive (MSFD) (Directive 2008/56/EC), and will contribute to the conservation of the marine environment and prevent its deterioration.

Key results

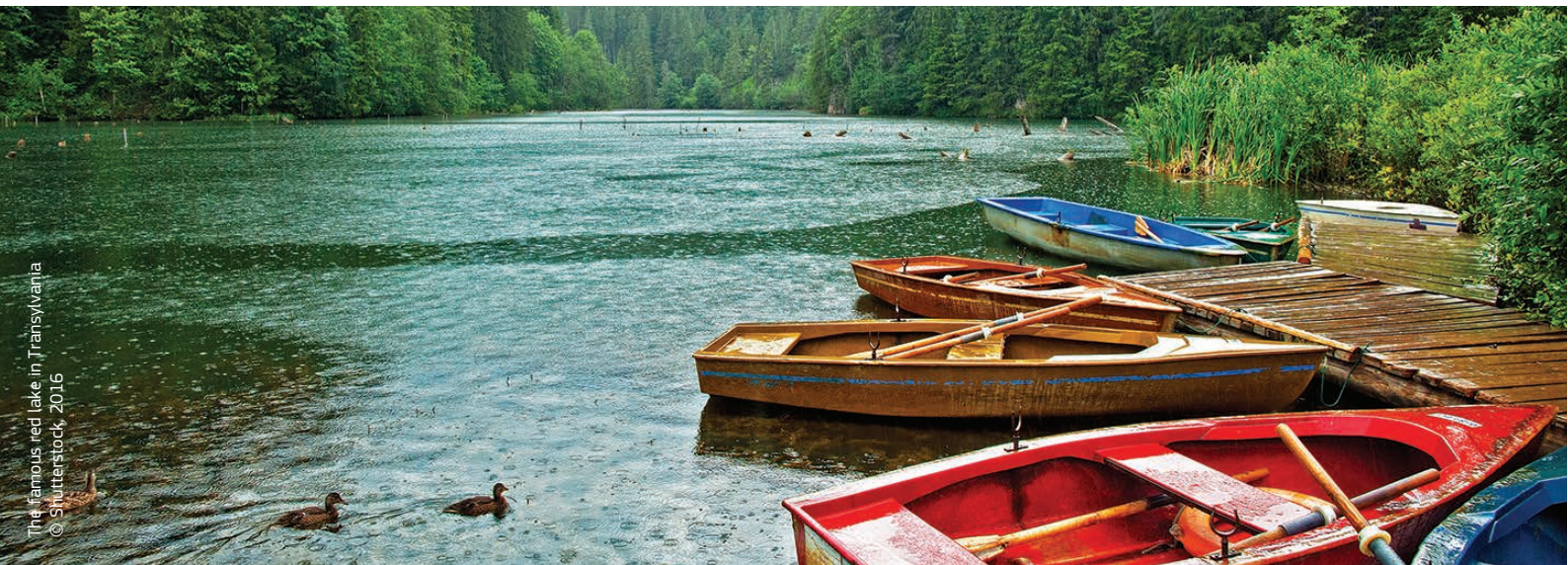
Improved surveillance and preservation of good environmental status of the Black Sea.

Budget

€3.3 million

(1.49 % of the OP allocation)





The famous red lake in Transylvania
© Shutterstock, 2016

Simplification

The administrative burden for beneficiaries will be reduced by simplifying the application process and project implementation, including through implementation of a simplified cost approach, standardisation of the application process for beneficiaries, improved communication with (potential) beneficiaries at central and regional level, etc.

Synergies

Romania will implement Community Led Local Development (CLLD) in the Danube Delta in coordination with the other instruments funding the wider ITI in this area. The EMFF will contribute with EUR 37 million for projects submitted by local beneficiaries under the various axes of the EMFF OP.

Success stories

This information is not available at the moment but will be updated as soon as possible.

More information

- [European Commission Fisheries](#)
- [EMFF Managing Authority in Romania](#)
- [European Maritime and Fisheries Fund](#)
- [Aquaculture multiannual national plan](#)
- [Representation of the European Commission in Romania](#)