

Mofi 

Mobile fisheries log



**Baltic Sea Cod Quotas
2018, closure period
February/ March**

**Legal basis: Footnote in
TAC Regulation foresees
Exemption for vessels below
12m fishing not deeper than
20m**

*„Electronic monitoring
System certified by the
Control Authority“*



Start new fishing trip

Departure date and time

05-09-2017

19:06

Type of fishing gear used on trip

Gillnets

Begin trip

Cancel

Start trip screen

Date, time and position automatic

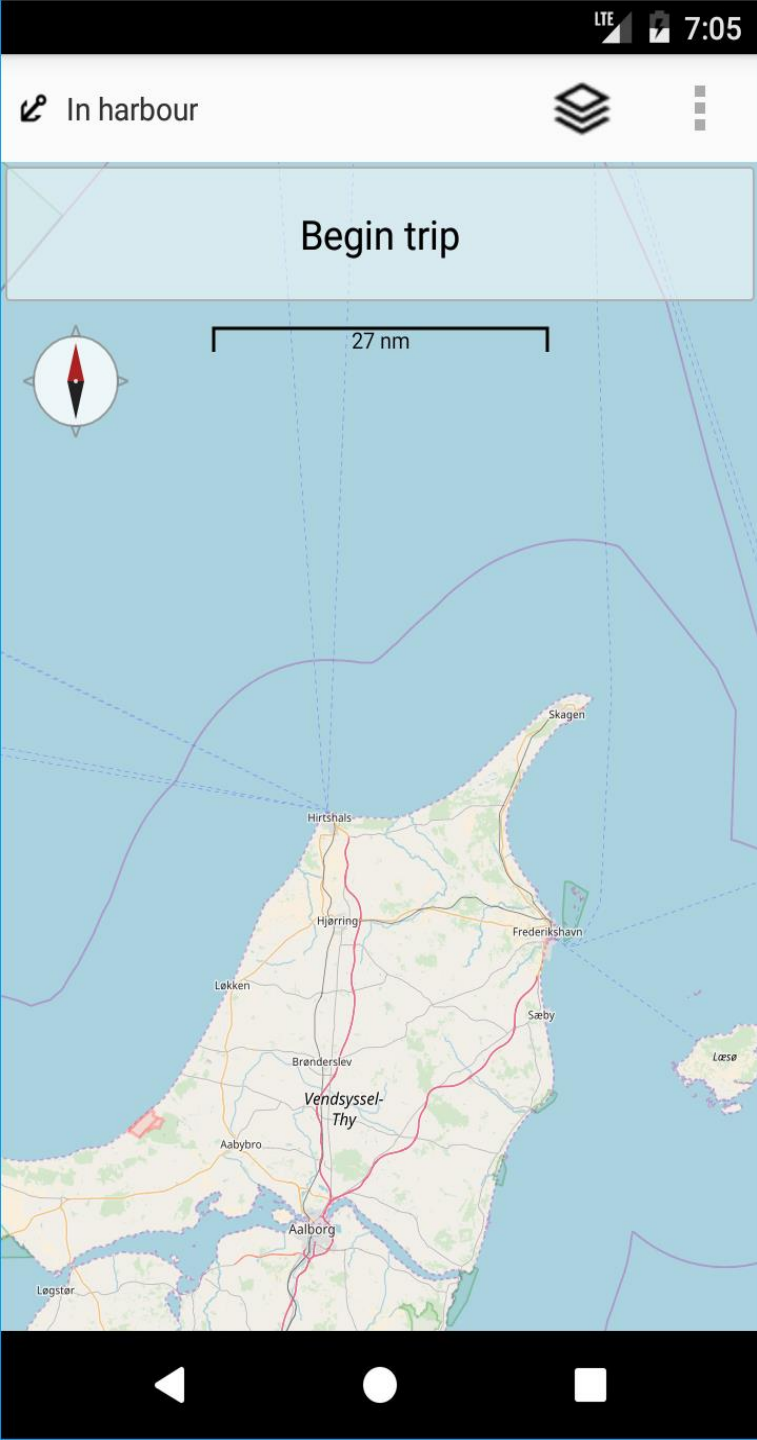
Drop down menu for fishing gear

**Duration of development:
one year (2017)**

IOS version: August 2018

**Easy to adapt to other
languages**

**Costs for data transmission negligible:
very small data packets, flat rates**



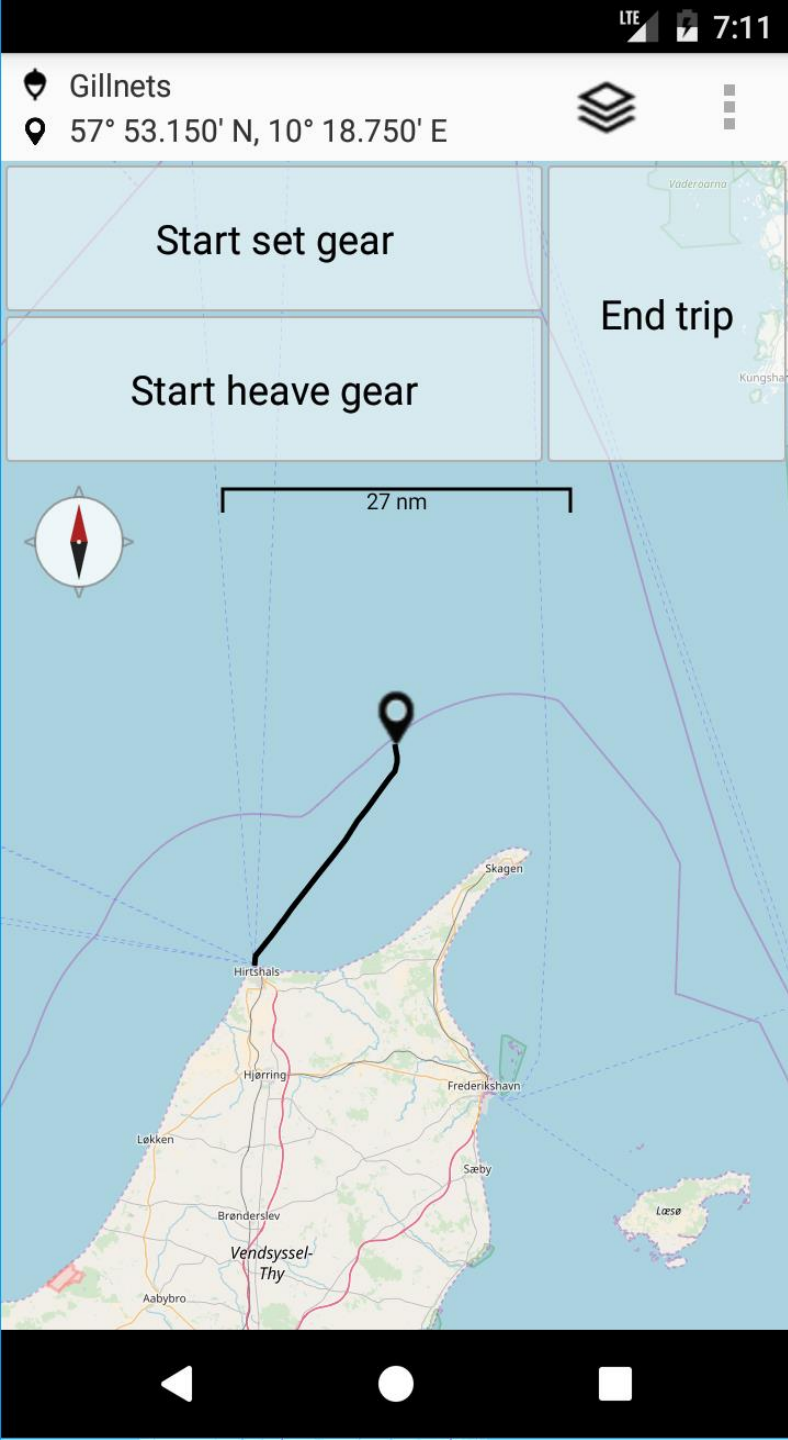
In harbour screen

Android higher than 5 downloadable in Google Play (IOS version too late)

Devices on board: any smartphone, even a used one for 40 €

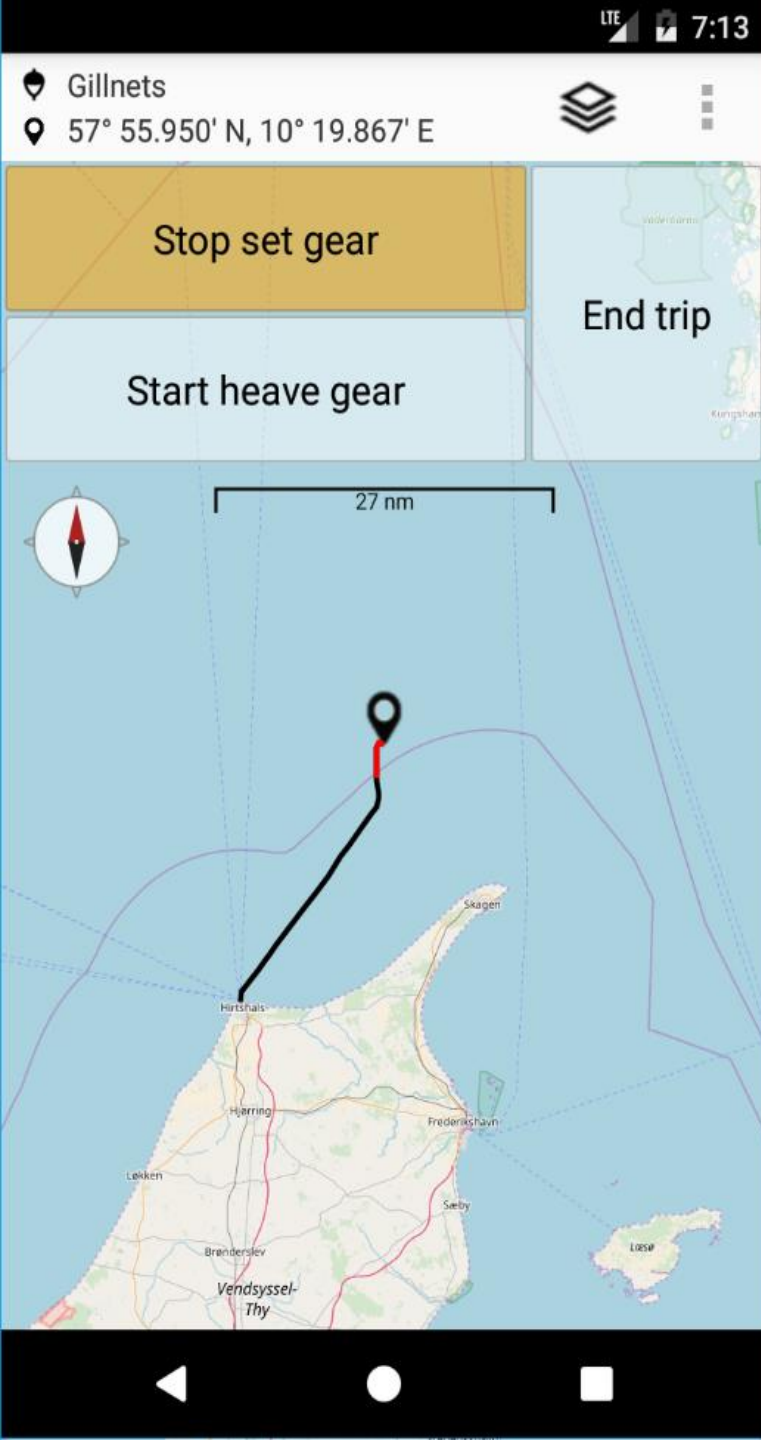
Problem: water, cold and wet fingers

Solution: big buttons and bluetooth connection



Sailing to fishing ground

Press:
Start set gear



Press:
Stop set gear

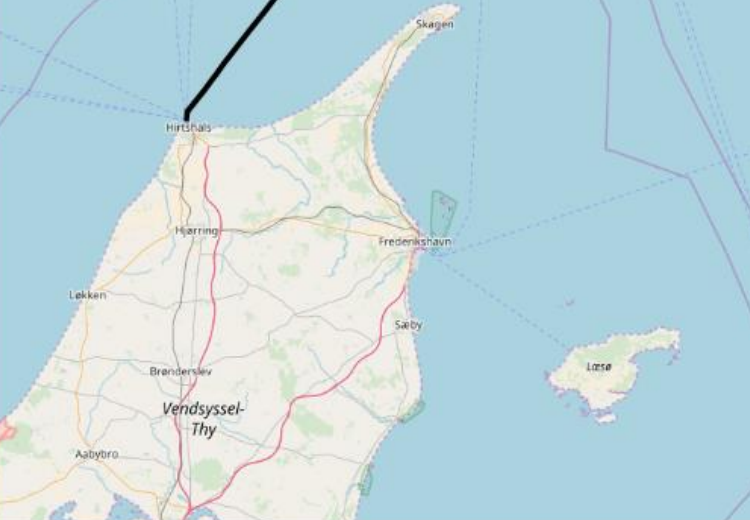


Start set gear

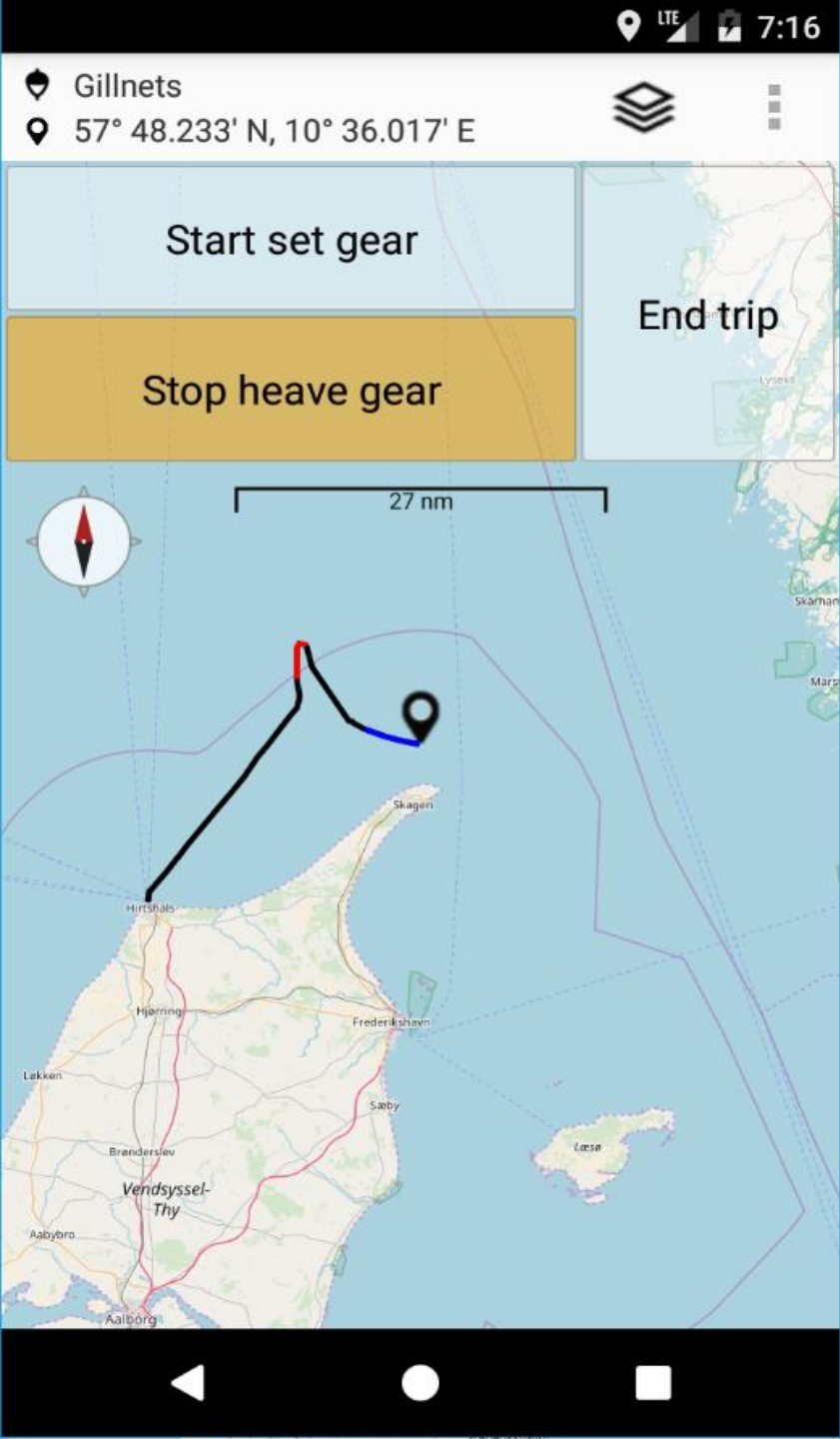
End trip

Start heave gear

27 nm



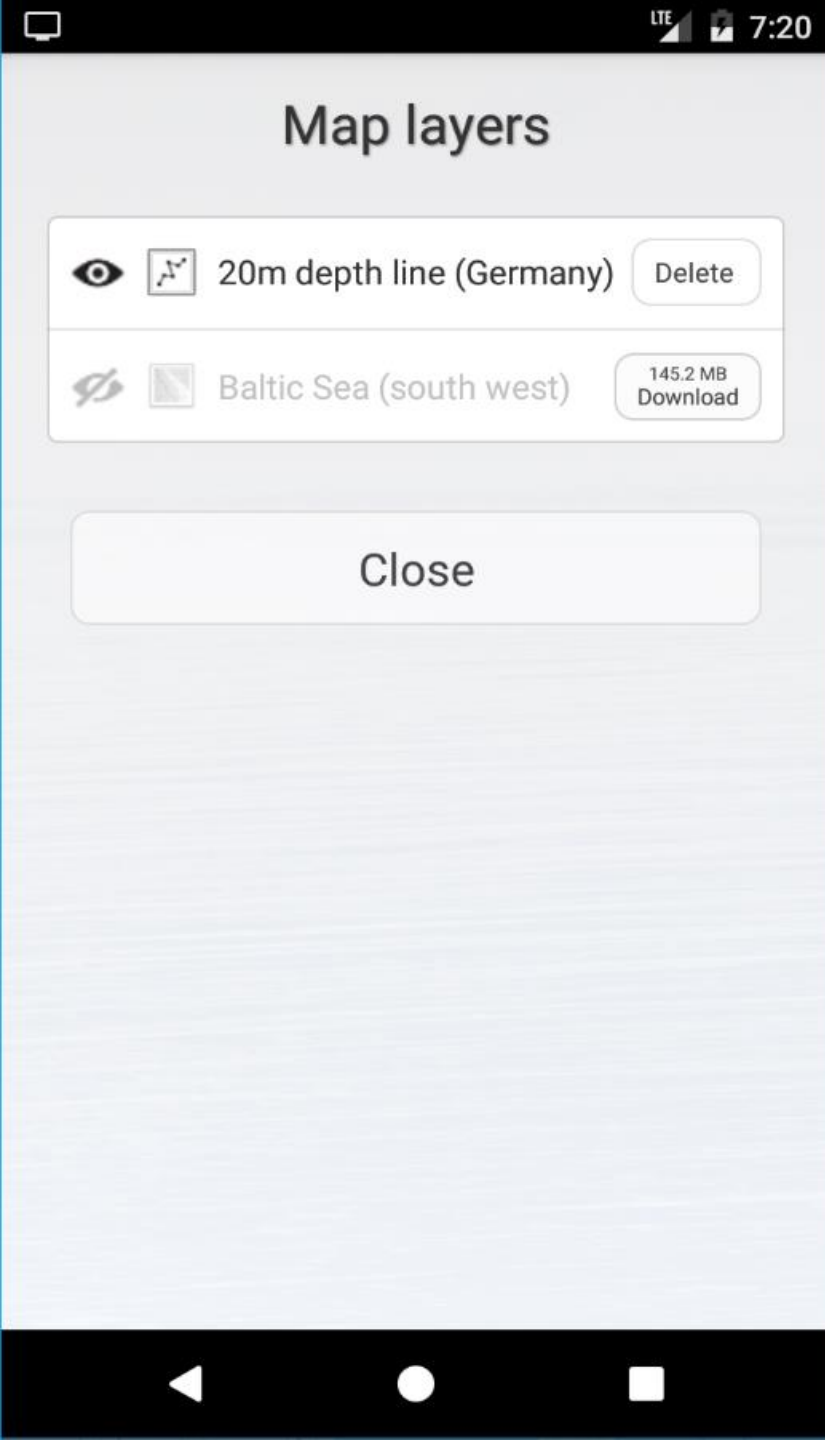
Press:
Start heave gear



Press:
Stop heave gear



Steaming back



Layer: 20 m depth line

**Other layers possible,
no big effort to implement**

Costs:

20.000 € for Android

5.000 € for IOS

4.000 € for additional features

10.000 € for hosting and monitoring

39.000 € in total

No financial support so far

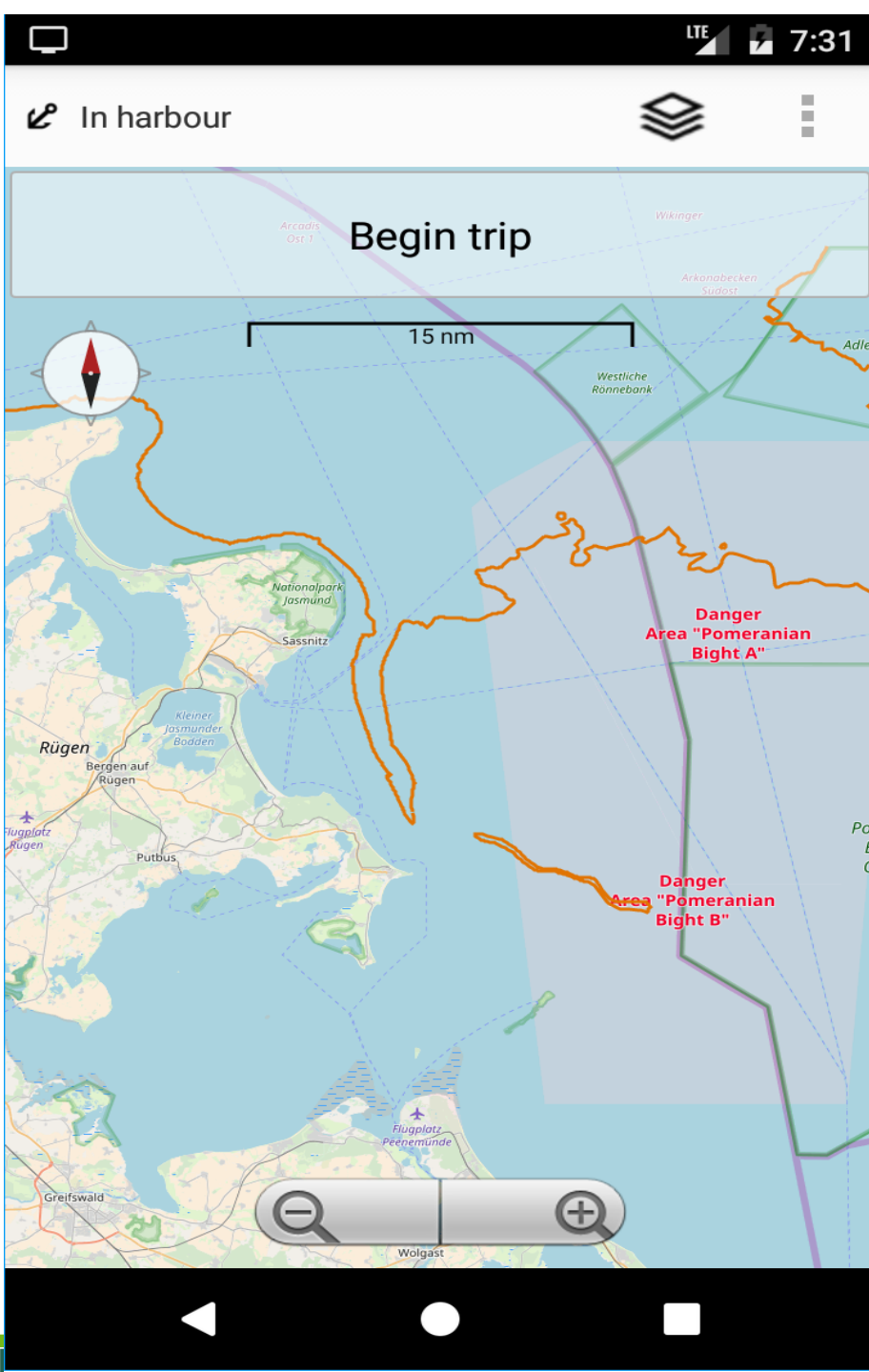
Users: circa 100

fishermen,

no major technical

problems, user

friendly



German 20m depth line

Those who used it, could prove that they fished not deeper than 20 m

Cross checks with cod landings

Others felt too much control and abstained from the possibility of exemption

Next possible step: extension for catch data

A good tool for SSF
Call for tender in DE necessary