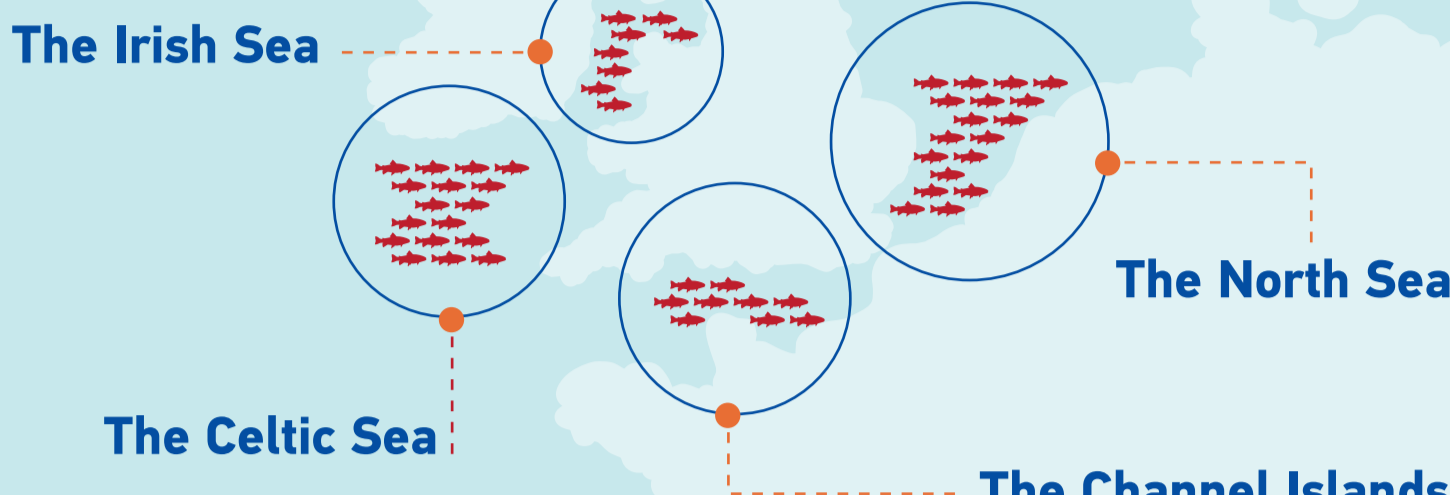


# Protecting sea bass

The European Commission has announced a package of measures to protect sea bass

**Emergency ban on pelagic trawling of sea bass during spawning season**

(until the end of April) in:



**Complementary measures will be proposed to manage recreational fishing and limit catches by all other commercial fisheries**

in coordination with:



**The European Commission will put forward a proposal to the Council**

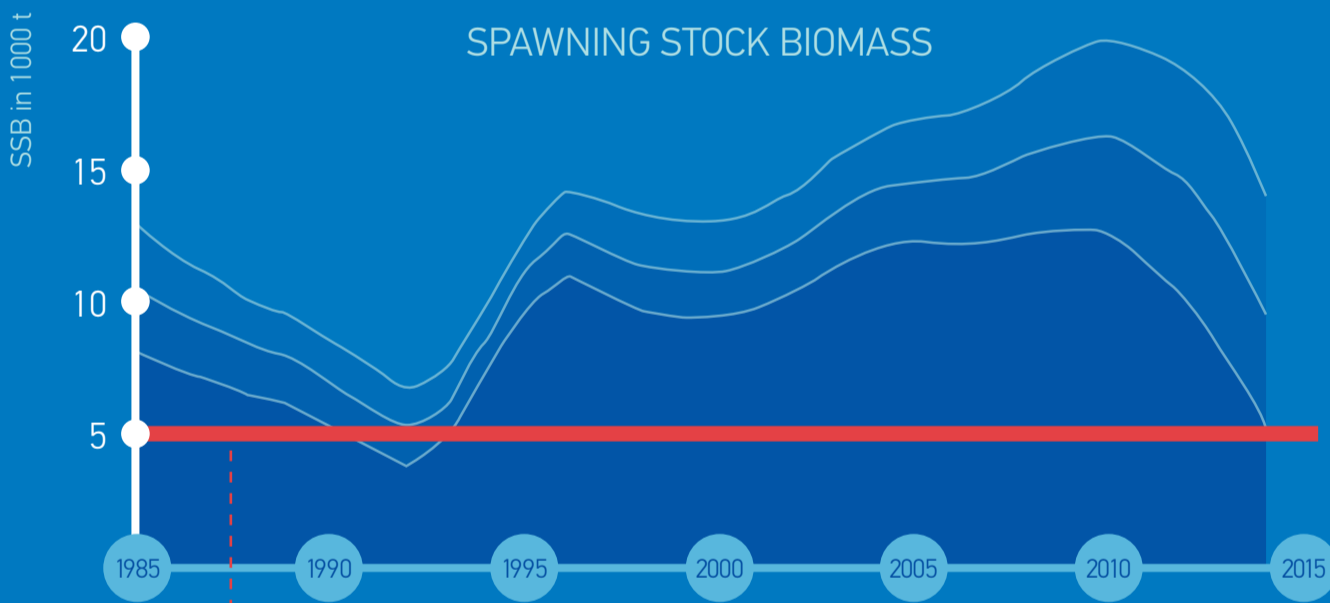
## Why pelagic trawling?

**Pelagic trawlers endanger sea bass during the spawning season** (when they are most vulnerable)



**If the fishing of sea bass during the spawning season continues, the stock's future will be jeopardised**

## Sea bass a stock in decline



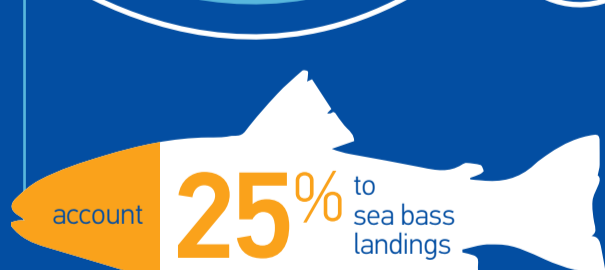
**Below this limit, reproductive capacity risks being severely inhibited**

We are witnessing a rapid decline in sea bass stocks that could lead to a collapse

Source: ICES 2014, advice for sea bass in southern North Sea, Channel, Celtic Sea, Irish Sea

## Sea bass & recreational fishing

**Sea bass is a popular target for recreational fishers, especially anglers**



Recreational angling supported **10 400 full-time equivalent jobs** in 2012