



Netherlands Commission for
Environmental Assessment

Independent quality control

Dutch experience

Gijs Hoevenaars

Table of Contents



Independent quality control in The Netherlands:

- **Independent Commission** of national experts, which is not part of government
1. What is the Commission?
 2. How does it work?
 3. Example



Netherlands Commission for Environmental Assessment (NCEA)

- NCEA advises competent authority on
 - Scoping
 - EIA
 - SEA
 - Monitoring
- Competent authority is obliged to motivate how advice has been taken into account in decision-making

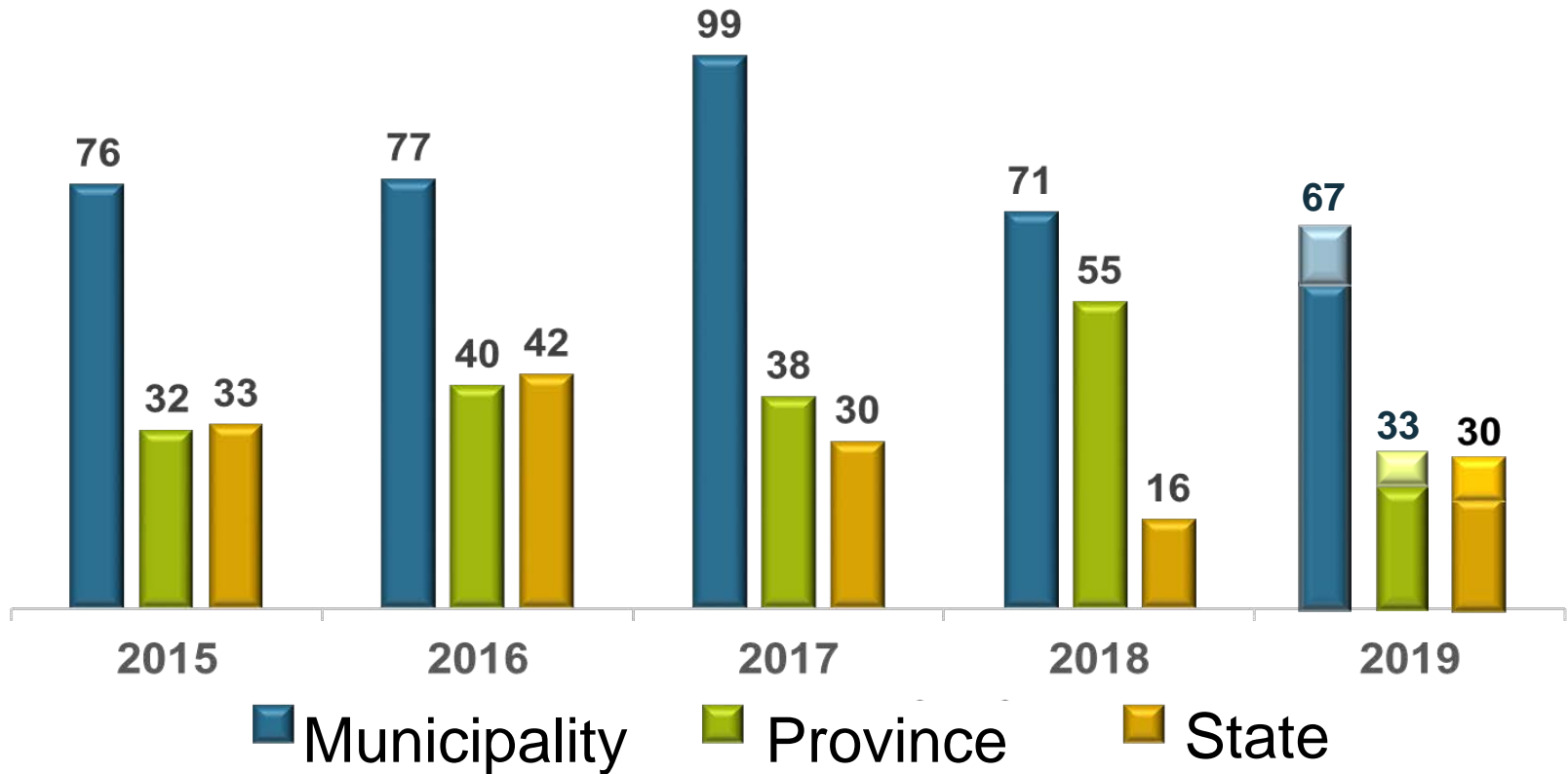


Some facts

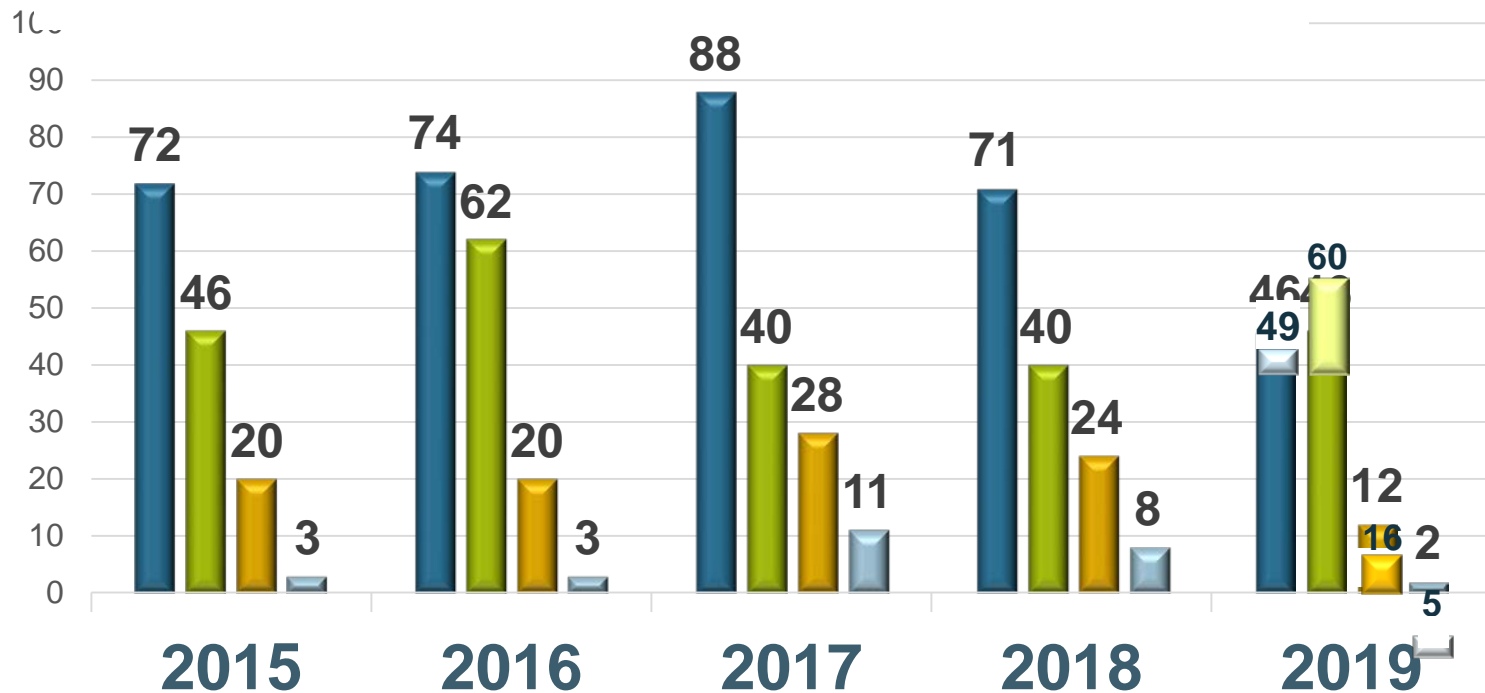
- Established in 1987
- 30-35 Employees (ca. 15 “advisers”)
- Budget ca. 3.3 million €/year
- In 2014: shift from funding by three ministries to being paid per advice (profit principle)
- Ca. 160 assessments/year
- Process time ca. 6 weeks



Who asks advice?



Published advices



■ Review
■ Additional review

■ Scoping advice
■ Other

70 Review of EIA and SEA reports

47 Reports with essential information missing

23 Reports without essential information missing

25 reviews of additional info

22 unclear

19 No longer information missing

6 Still information missing

Decision-making

2018



How does it work?

- Secretariat model
- Working group, consists of:
 - President
 - Technical secretary
 - 2 to 10 experts
- Database of 350 experts
- Site visit
- Review: check on completeness and correctness



Independent

- Experts have no involvement in the project in terms of:
 - employer,
 - colleagues,
 - private connection (e.g. partner),
 - city of residence,
 - additional jobs
- Do not advise developer or affected parties



Transparent

- On the basis of public information
- Website discloses which projects are under review
- Each advice is published on its website
- Press release



NCEA in court cases (1)

Judges tends to follow NCEA advice,
because of its:

- authority
- expertise
- consistency



NCEA in court cases (2)

- Quality of the report in general
- Scope and quality of the study of alternatives
- Quality of the description of impacts (maximum impact)
- Scientific knowledge and research methods
- Actuality of the information
- Effectiveness of mitigation measures



Case Schiermonnikoog



Case Schiermonnikoog

Terms of reference exploration drilling by NCEA (2013)

Key elements to be included in the EIA-report:

- Clear explanation of procedure because of civil unrest
- Impact on nature:
 - Overview of impacts during the construction (underwater sound emissions)
 - Overview of impacts during exploration (flaring)

Pm in the Netherlands strict regulation for discharging drilling material and chemicals is in place, therefore this is a minor subject in EIA's



Cas



Impact on seascape / horizon



Case Schiermonnikoog

Impact of flaring on bird
migration



Case Schiermonnikoog

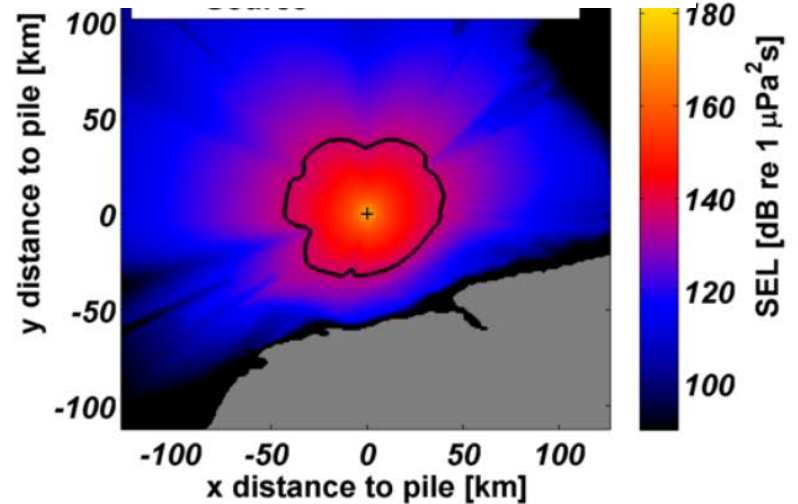
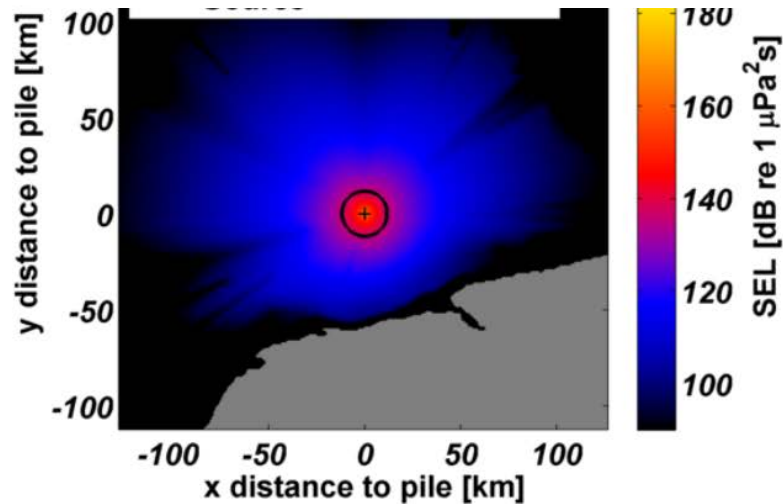


un

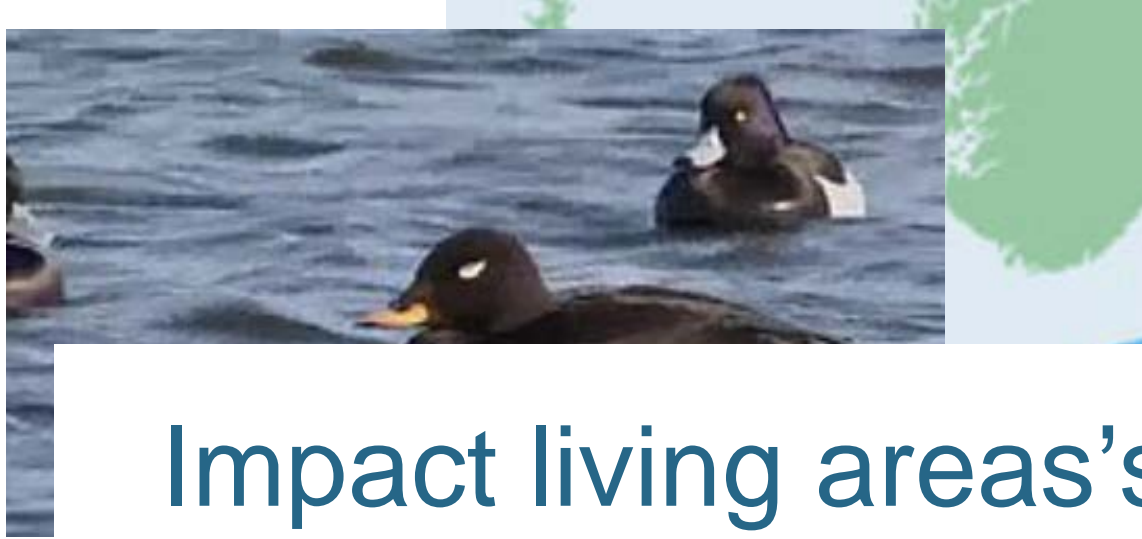
d

Impact underwater noise

100



Case Schiermonnikoog

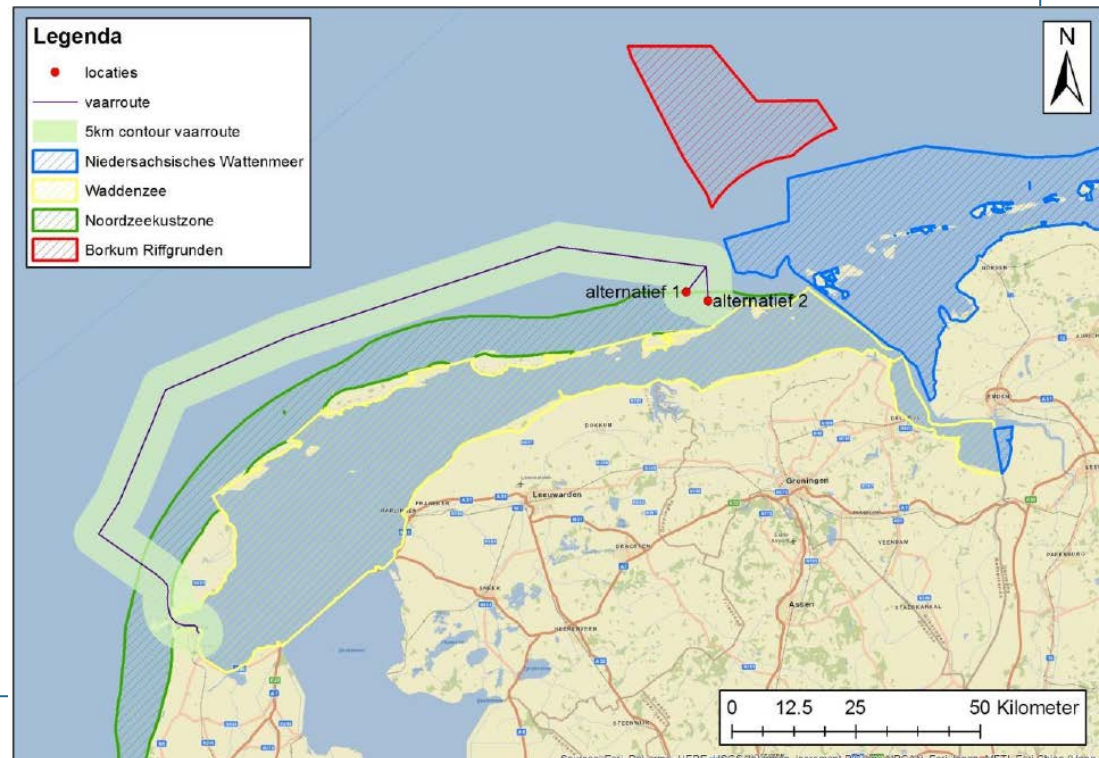


Impact living areas's birds



Case Schiermonnikoog

Alternatives exploration phase:
location platform
shipping routes to drilling site through living areas
of birds



Case Schiermonnikoog

Review EIA exploration drilling by NCEA (2015)

- EIA of good quality
- Impact on mammals of underwater sound emissions not adequately described...
 - no consequences because a more environmentally friendly alternative was selected (required no hammering)
- NCEA confirms impact on living areas of birds will be minimized
 - because of special shipping routes and minimum fly altitudes for helicopters



Case Schiermonnikoog

Outlook EIA production by NCEA (2015)

Key issues to be included in EIA:

- Alternatives production site: platform or not (drill from mainland)
 - Platform will have a large visual impact during night and day in this world heritage and protected nature reserve
- Subsidence and nature values
 - ‘hand on the tap’ / monitoring

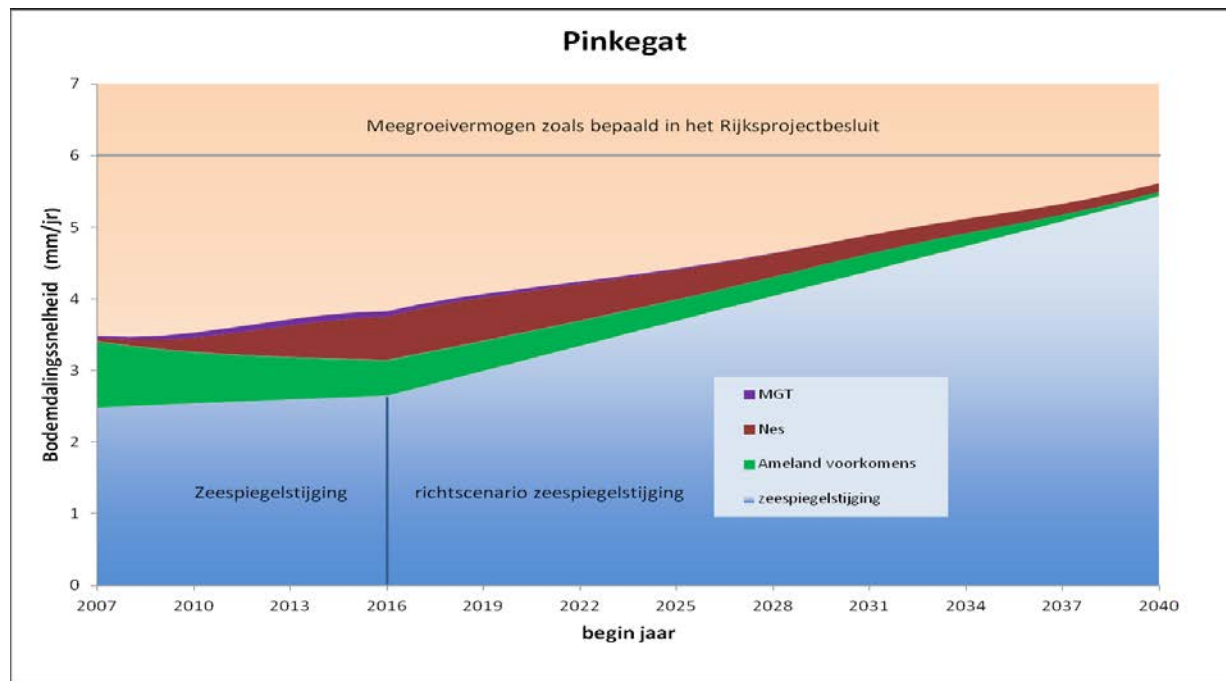


Case Schiermonnikoog

‘Hand on the tap’

Adjust gas production speed to ecosystem limits

- Taking into account: 1) nature values, 2) subsidence, 3) local sand dynamics and 4) sea level rise => monitoring



Thanks for your attention!

ghoevenaars@eia.nl

