



European
Commission

THE EU BLUE ECONOMY

Marine living-resources



Maritime transport



Port activities



Marine renewable energy



Shipbuilding and repair



Coastal tourism



Desalination



Marine minerals



Ocean energy



Maritime defence



Blue bioeconomy / biotechnology



Submarine cables



Maritime
security

Maritime
data

Maritime
spatial
planning

Shared
infrastruc-
ture

Environ-
mental
protection

Common
skills

THE EU BLUE ECONOMY

ESTABLISHED SECTORS EMERGING SECTORS

The seven established sectors

+15%
compared to 2009.

GVA
€218 billion
in 2018

+18%
compared to 2009.

GROSS OPERATING SURPLUS
(profit)
€95 billion

+12%
compared to 2009.

TOTAL TURNOVER
€750 billion

40% Coastal tourism

16% Port activities

16% Maritime transport

HIGHEST GROWTH

compared to 2017

GVA

+16%

+7%

+20%

+14%

EMPLOYMENT

+12%
since 2017.

Direct EMPLOYMENT
5 million

62% Coastal tourism

11% Living resources

11% Port activities

50
persons
in 2009

X8
4600
persons
in 2018

Offshore wind energy
(production and transmission),
young sector in expansion

BLUE BIOECONOMY
TURNOVER
(direct and indirect)
€350 MILLION

MARITIME DEFENCE

EMPLOYMENT
177 000 people

Defined as an emerging sector because data for it are currently emerging.

OCEAN ENERGY

70%
of all global –
wave & tidal –
energy in
EU waters

BLUE ENERGY EMERGING SECTOR
includes:

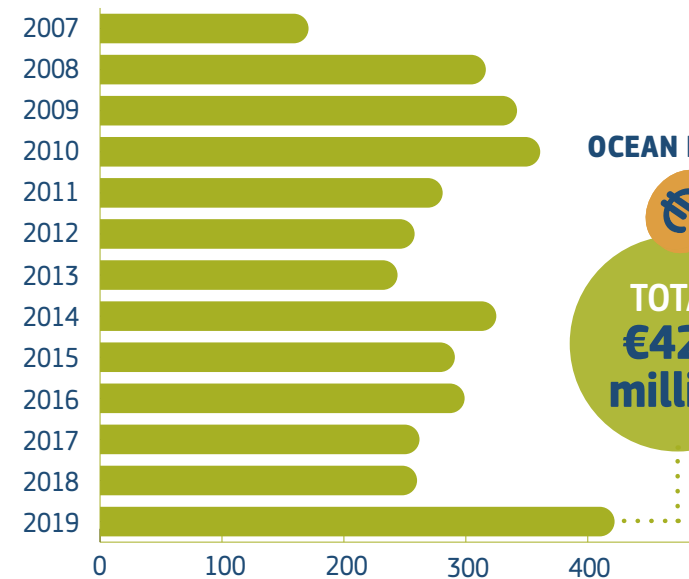
Tidal energy

Wave energy

Floating offshore wind

Hydrogen generation

Floating solar photovoltaic energy (FPV)



EU R&D expenditure on ocean energy

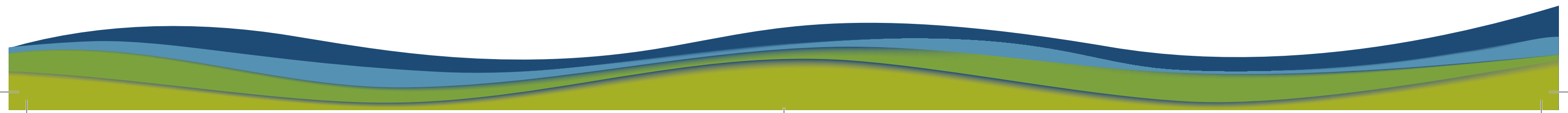
OCEAN ENERGY

TOTAL
€420 million

DESALINATION

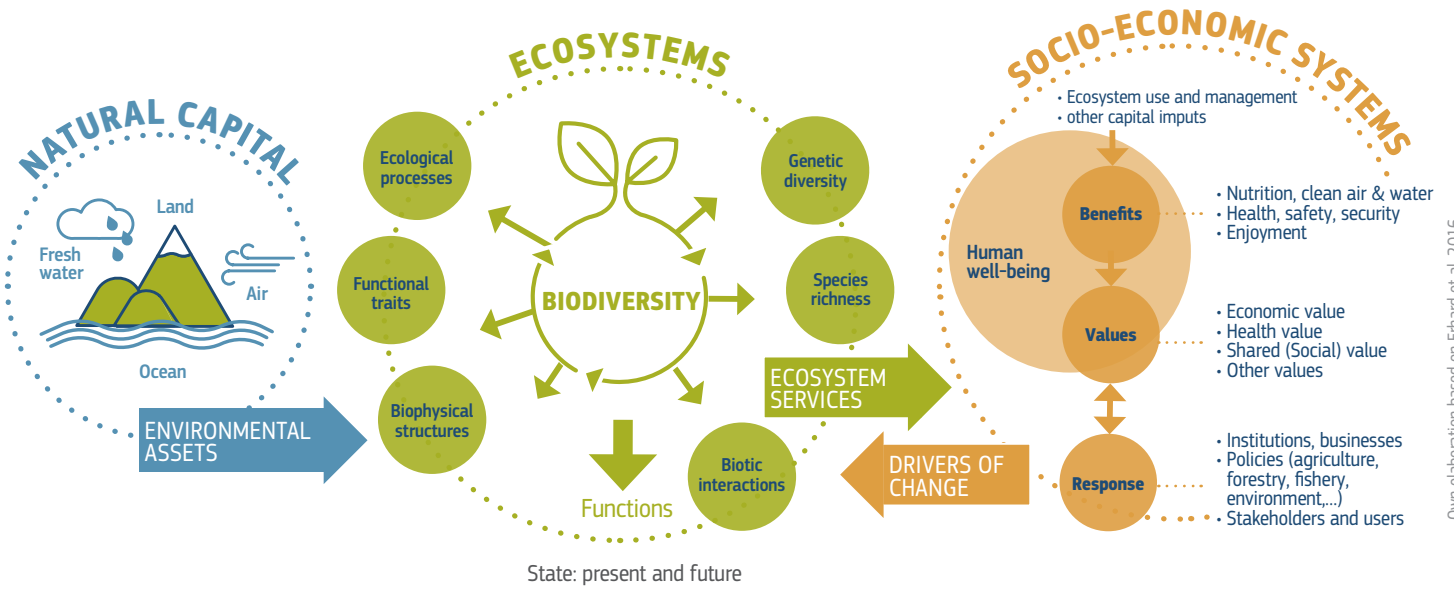
520m of contracted investments from 2019-2024.

TOTAL
€520 million



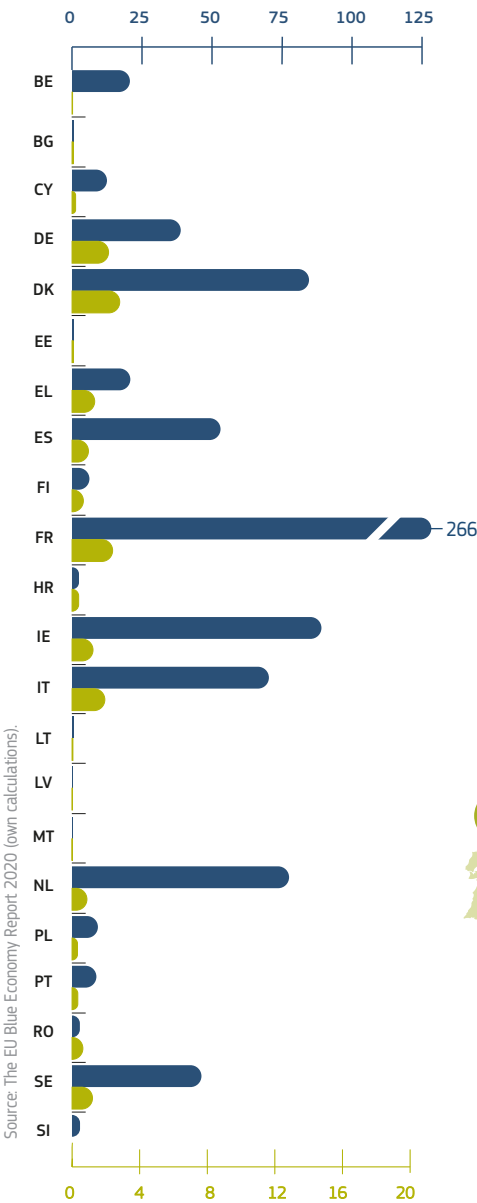
ECOSYSTEMS SERVICES

From natural capital to benefits to society



Own elaboration based on Erhard et al. 2016.

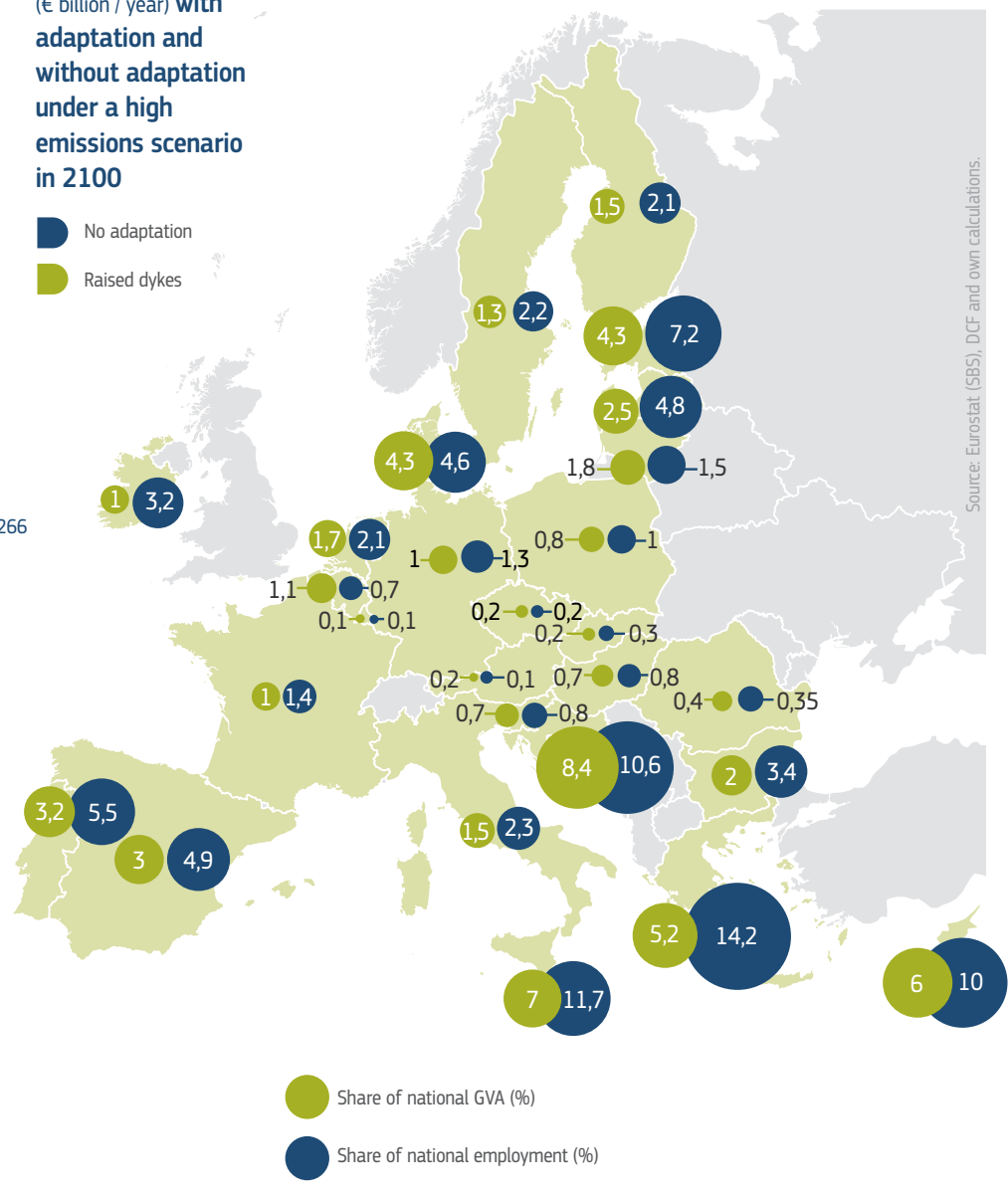
CLIMATE CHANGE ADAPTATION



Flood damage
(€ billion / year) **with adaptation and without adaptation under a high emissions scenario in 2100**

■ No adaptation
■ Raised dykes

SIZE OF THE BLUE ECONOMY



Source: Eurostat (SBS), DCF and own calculations.